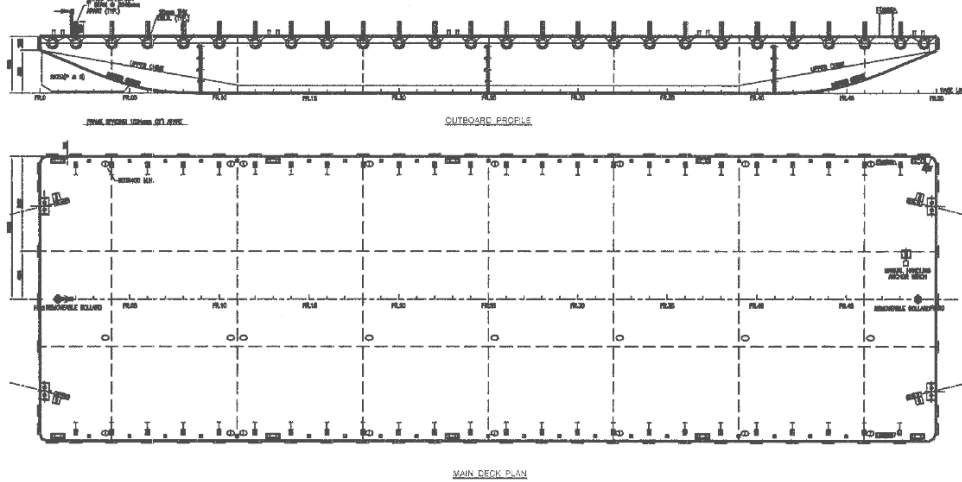


Maritime Dawn / Maritime Jewel / Maritime Swift



250 X 80 X 16 ft / 5,400 (TONS) DWT / DECK / TANK BARGES

Name of Vessel	Maritime Dawn, Maritime Jewel, Maritime Swift
Year Built / Registry	2005 / Singapore
Principal Dimensions	250 x 80 x 16 ft (76.20 x 24.38 x 4.88 m)
Classification	ABS + A1 Tank Barge
Draft – loaded / lightship	13' (3.91 m) / 2'7" (0.80 m)
Deadweight	Approx. 5,400 t (GRT 2220, NRT 666)
Deck Loading	15 t/m ²
Hull Plating Thickness	Deck plating 18 mm, bottom plating 14 mm, side shell plating 14 mm
Bulkheads	2 longitudinal b/h plating thickness 10 mm 7 transverse b/h plating thickness 10 mm
Tanks	24 tanks ballastable through manholes on deck
Outfitting	Tow brackets 2 sets each fitted with chafing chains at bow and stern. 1 x 1020 kg anchor with 20t hand winch, double bitt bollards 10 sets. 24 manholes on deck one for each tank with recess type in cargo area. Vertical ladder 24 sets. 66 heavy duty tyre fenders dia 1500 mm thickness 500 mm.
Cargo stanchion	24 each Port & Starboard 1200 mm high 3048 mm apart from frame 2 to frame 48. Each made of welded combination beam with web 25 mm thick 450 mm high at top 600 mm high at bottom and flange 30 mm thick 30 mm wide all around. 47 padeyes each port and starboard fitted for cargo lashing.
Painting	Exterior and interior blasted to SA2.5 coated with Kansai Marine Paints system. Tanks coated with tar Epoxy 2 x 125 mic