

SEMCO L-301

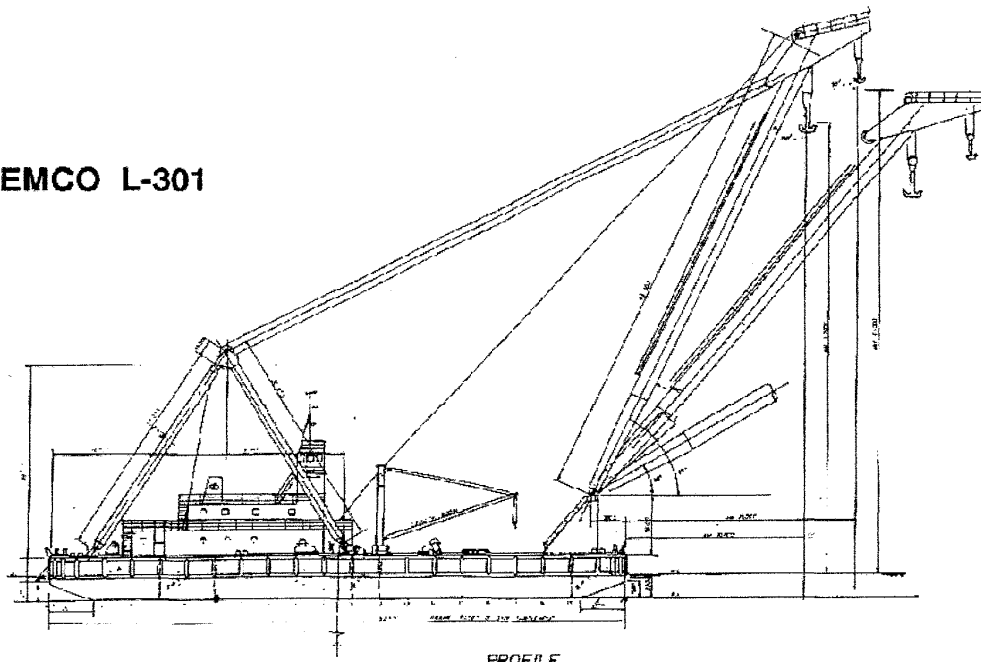


300 TONNES SHEERLEG FLOATING CRANE

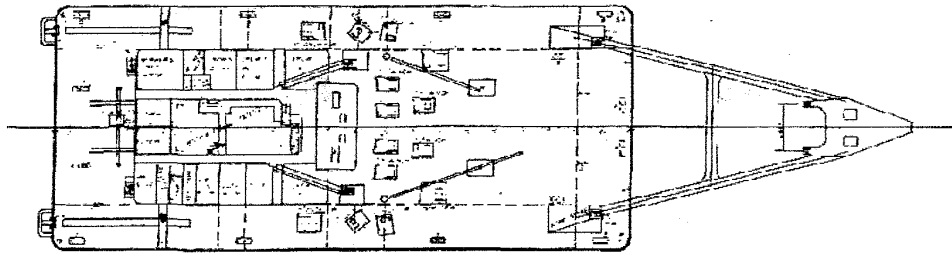
PRINCIPAL PARTICULARS

Year Built	1973	Main Hook Capacity	2 x 150 tons
Classification	LR 100A1 pontoon	Auxiliary Hook Capacity	1 x 50 tons
Flag	Singapore	Working Line	2 x 5 tons (winch no. 2 & 3)
Harbour Craft No.	SR 0179 A	Forward Mooring	2 x 26 mm x 1000 feet (winch no. 7 & 8)
Length Overall	52.5 m	Forward Anchor	Wire 28 mm x 500 feet (winch no. 5)
Breadth Moulded	22.8 m	Aft Mooring	2 x 44 mm x 1500 feet
Depth Moulded	4.0 m	Aft Anchor	2 x 4½ tons stockless
GRT	1644	Working Winch	2 x 500 feet (winch no. 4 & 6)
NRT	493	Forward Tugger line	1 x 24 mm x 200 feet
Fuel Capacity	70 tons		
Fresh Water Capacity	160 tons		

SEMCO L-301



PROFILE



UPPER DECK PLAN

CRANE SPEED NOMINAL HOISTING CAPACITY FOR	RAKE OF JIB				
	62°	50°	50°	40°	30°
MAIN	LOAD 300 T	200 T	260 T	110 T	0
	LIFT 41.3	39.1	34.5	30.0	24.9
AUX	OUT REACH 16.5	20.8	27.0	31.2	35.2
	LOAD 50 T	50 T	30 T	50 T	50 T
	LIFT 50 T	46.3	35.5	32.1	30.4
	OUT REACH 18.2	23.2	30.9	37.2	42.5
	MAIN HOOK	3 1/2 min			
	AUX HOOK	12 1/2 min			

LOAD CURVES

