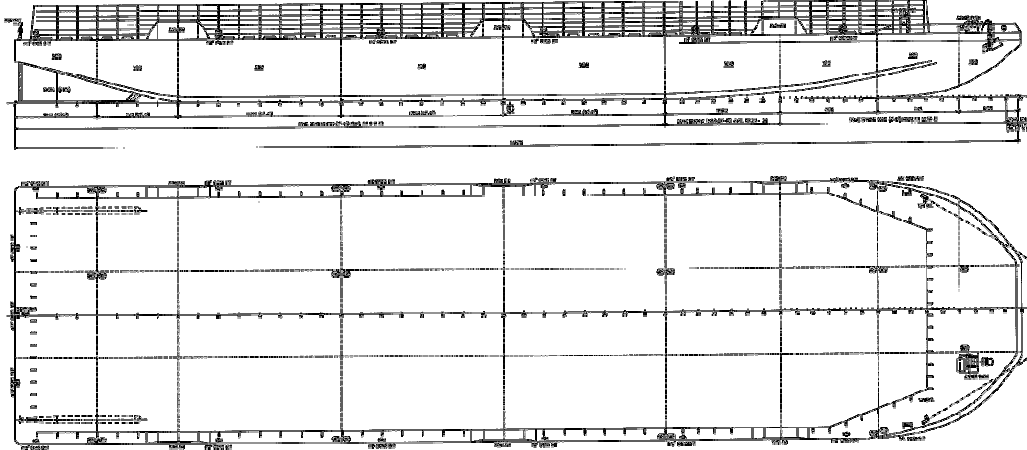


Mandiri Bravo 1, 2, 3, 4 Bravo 5, 7



365 X 92 X 22 ft / 12,000 (TONS) DWT / BARGES with Sideboards

Name of Vessel	MANDIRI BRAVO 1, 2, 3, 4 BRAVO 5, 7
Year Built / Registry	2008 / Singapore (Bravo 7) 2006 / Singapore (Mandiri Bravo 2, 4, Bravo 5) 2006 / Indonesia (Mandiri Bravo 1, 3)
Principal Dimensions	365 x 92 x 22 ft (113.081 x 28.042 x 6.934 m)
Classification	ABS + A1 Barge (Mandiri Bravo 2, 4, Bravo 5, 7) BK1 (Mandiri Bravo 1, 3)
Draft Loaded	5.50 m
Deadweight	Approx 12,000 t (GRT 5266, NRT 1579)
Deck Loading	10 t/m ² (Mandiri Bravo 1,2,3,4, Bravo 5) 15 t/m ² (Bravo 7)
Hull Plating Thickness	Deck plating 16 mm, Bottom plating 14 mm, Side shell plating 12 mm
Bulkheads	2 longitudinal b/h plating thickness 10 mm 8 transverse b/h plating thickness 10 mm 1 collision b/h plating thickness 9 mm
Sideboards	12 ft high x 10 mm thick along sides and at ends
Anchoring Equipment	1 x anchor winch 10 t pull at first layer 1 x 2850 kg stockless bower anchor and 1 spare 1 x 370.5 m anchor wire 52 mm dia 1 x 12.5 m anchor tail chain 42 mm dia
Deck Fittings	9 x flush type watertight manholes 600 X 400 mm (centre voids) 18 x raised type watertight manholes 600 x 400 mm (side voids) 27 x vertical steel ladders for access to under-deck voids 3 x navigation light stands 15 x single post mooring/towing cross bits, 300 mm diameter 6 x push pads, 3 each port and starboard