

POSH COMMANDER



16,000 BHP / 193 TBP / DP2 / AHTS **Call Sign: 9V8181**

Principal Particulars:

Flag	: Singapore
Year Built	: 2011
Place Built	: USC Keihin Shipyard, Yokohama, Japan
Length Overall	: 75.27 m
Length B.P.	: 65.00 m
Beam Overall	: 18.00 m
Depth Moulded	: 8.10 m
Max Draught	: 6.75 m
Design Draft	: 6.00 m
IMO No.	: 9514286
Official No.	: 395422

Classification:

ABS A1 Towing vessel, Fire fighting vessel Class 1, Offshore Support Vessel AH, (E) + AMS, +ACCU, +DP-2

Capacities:

Gross Tonnage	: 3,261 tons
Net Tonnage	: 978 tons
Deadweight	: 3,174T @6.60m draft
Fuel Tank	: 951.58 m ³
Potable Water	: 590.96 m ³
Drill Water	: 705.82 m ³
Mud / Brine Tank	: 434.76 m ³
Dry Bulk	: 250 m ³ in 4 tanks
Deck Cargo Area	: 468m ²
Deck Cargo	: 1,000 tons
Cargo Deck Load	: 10T/m ² in 171m ² & 5T/m ² in 297m ²
Freezer room: 9.6/m ³ , Chiller room: 9.6/m ³ , Prov.room: 22.4/m ³	

Speed/Fuel:

Max Speed	: approx. 16.0 kts / 55 tonnes / 24 hrs
Economic Speed	: approx. 12.0 kts / 20 tonnes / 24 hrs
AH operations	: approx. 30 tonnes / 24 hrs
Towing 75%/165T Pull	: approx. 40 tonnes / 24 hrs
Harbour Mode	: approx. 1.5 – 2 tonnes / 24 hrs
Quality of Fuel	: MGO (DMA)

Discharging Rates:

Drill Water/Pump	: 1 x 200 m ³ /hr@90m head
Fresh Water/Pump	: 1 x 200 m ³ /hr@90m head
Fuel/Pump	: 1 x 150 m ³ /hr@90m head
Brine/Pump	: 1 x 75 m ³ /hr@180m head
Liquid mud/Pump	: 1 x 75 m ³ /hr@180m head
Flow Meter	: 1 for FO
Flow Meter	: 1 for FW

Accommodation:

Officer/Crew	: 22
Berth Total	: 30
Cabins Total	: 21
Hospital	: 1
Air conditional throughout, fully furnished with office, mess, recreation room, laundry room etc	

Machinery & Equipment:

Main Engines	: 2 x 8000 BHP Wartsila12V32, 16,000 BHP
Generators	: 2 x 500kW Caterpillar diesel generators @3x440V 60Hz
	: 1 x 72kW emergency diesel generator
	: 2 x Shaft generator @ 2,240kw each
Propellers	: 2 x CP propellers in fixed nozzles
Bow Thruster	: 2 x Tunnel thruster 800 kW approx. 12T
Stern Thruster	: 1 x Tunnel thruster 800 kW approx. 12T
Deck Crane	: 1 x Fixed crane on Port side SWL 5.0 tons @14m radius
	: 1 x moveable crane SWL 4.5 tons @ 13m radius
Reefer Points	: 4 x 440v (2 port & 2 stbd) & 2 x 220v (2 port & 2 stbd)

Tow/Anchor-handling Equipment:

Tow/AH Winch	: 1 x Rolls Royce SL350W/BSL350W, double drum reversed waterfall
	: Line pull of 350T @ 16.3m/min @ 1 st layer
	: Brake holding capacity @ 450T @ 1 st layer of rope on the drum
	: 2,500m x 77mm dia wire capacity
Towing Wire Drum	: 2,500m x 77mm dia wire capacity
AH Drum Wire	: 2,500m x 77mm dia wire capacity
2 x Storage Reel	: 1,500m x 77mm (spare tow wire and towing pendants)
Tugger Winch	: 2 x 17 tons @ 13m/min nominal pull
Shark Jaw	: 2 x Triplex H-500 SWL 500 tons
Tow Pin	: 2 x Triplex S-200 SWL 200T Vertical 600T Horizontal
Capstans	: 2 x 10T @ 16m/min each
Stern Roller	: 1 x 500 tons SWL, 5m x 3m dia
Grapple & J-Hook	: 150 tons each
Wildcats/Gypsies	: 2 x 76mm / 2 x 84mm (spare)
Rig Chain Lockers	: 204.06m ³ (2 x 102.06m ³)

Towing / AH Wires:

Main Tow Wire	: 1,500m x 77mm dia (3 in.)
AH Wire	: 1,500m x 77mm dia (3 in.)
Spare Tow Wire	: 1,500m x 77mm dia (3 in.)

Mooring Equipment:

Windlass	: 1 x Rolls Royce BFGX63046, 12.2T @ 14.5m/min with 2 mooring drums
Anchors	: 2 x HHP Stockless Anchor, 2,150kg
Cables	: 990m x 46mm dia, 3a grade

DP/Joystick Control:

Converteam ADP-2 system + Converteam IJS

FiFi 1 System/Oil Pollution Control:

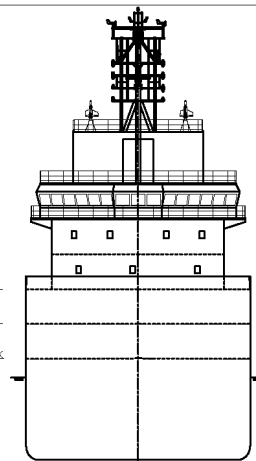
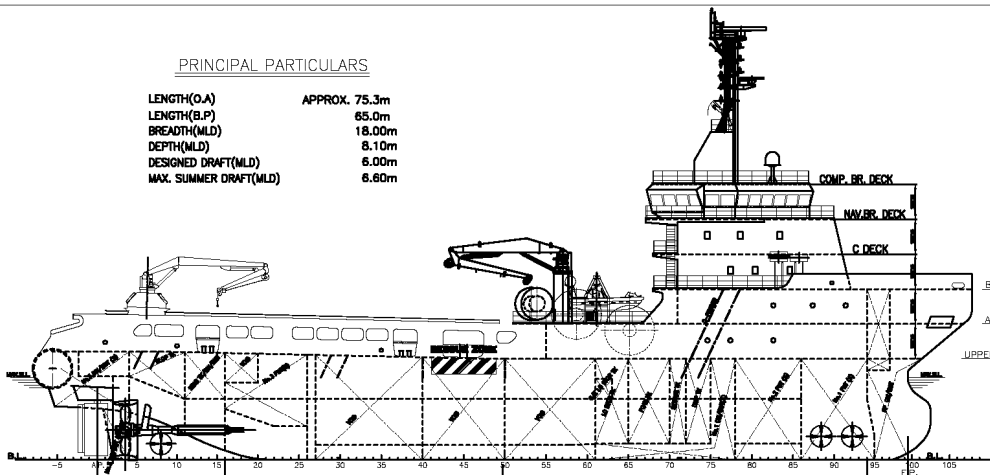
FiFi -1 with Foam Capability, foam tank capacity 23.53m³. Oil Dispersant tank capacity 12.19m³ and 2 booms.

Navigation & Communication Equipment:

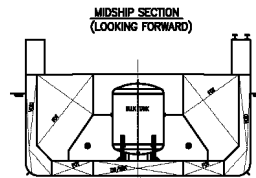
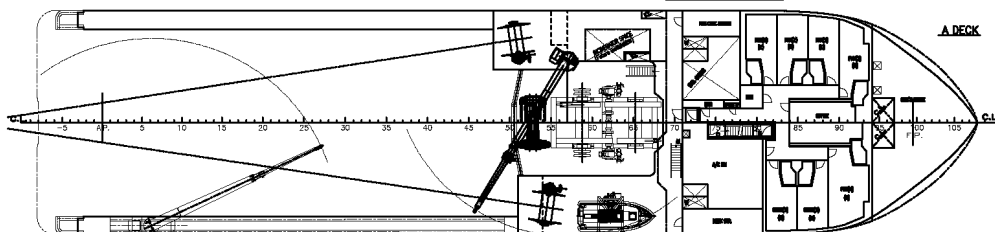
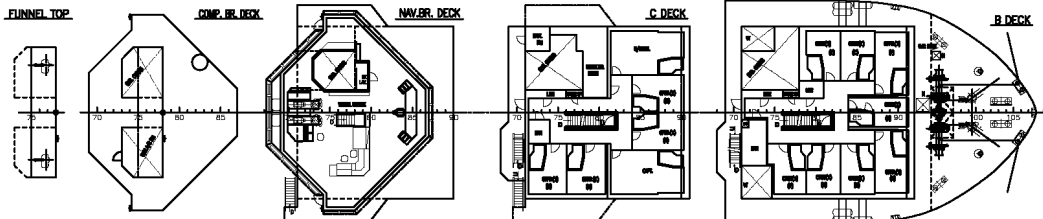
MF/HF Radio, Watchreceiver, 2 x VHF fixed, 5 WHF portable, 1 x Inmarsat C, Inm-B FB-500, Navtex, Autopilot, 2 x Radar/ARPA, VDR, 2 x DGPS, 2 x Yokogawa Gyros, Echo Sounder, Doppler Log, AIS Transponder, LRIT, 1 x Cyscan, SEVSAT Internet, etc.

PRINCIPAL PARTICULARS

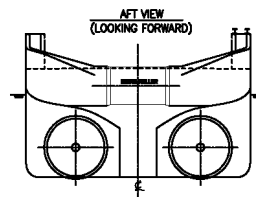
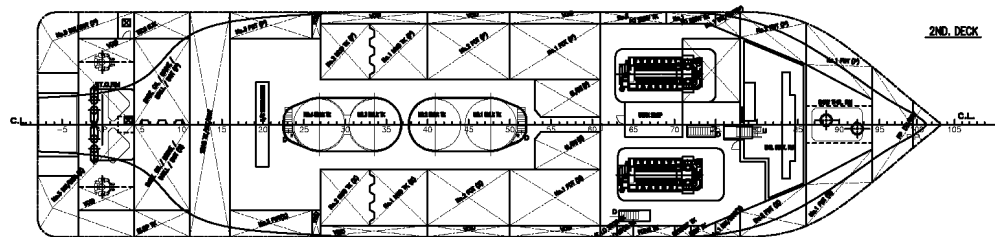
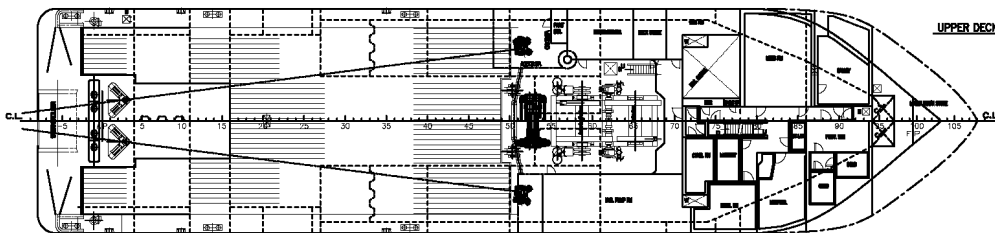
LENGTH(O.A) APPROX. 75.3m
 LENGTH(B.P) 65.0m
 BREADTH(MLD) 18.00m
 DEPTH(MLD) 8.10m
 DESIGNED DRAFT(MLD) 6.00m
 MAX. SUMMER DRAFT(MLD) 6.60m



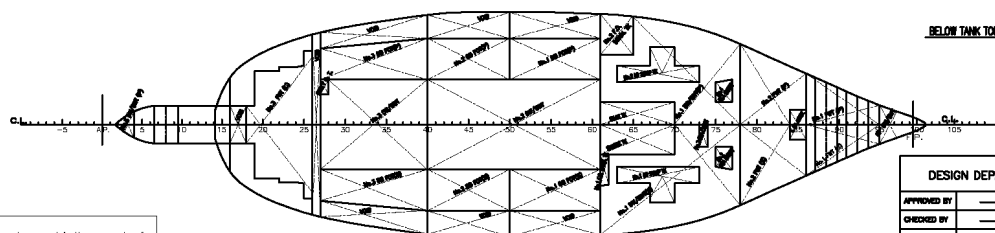
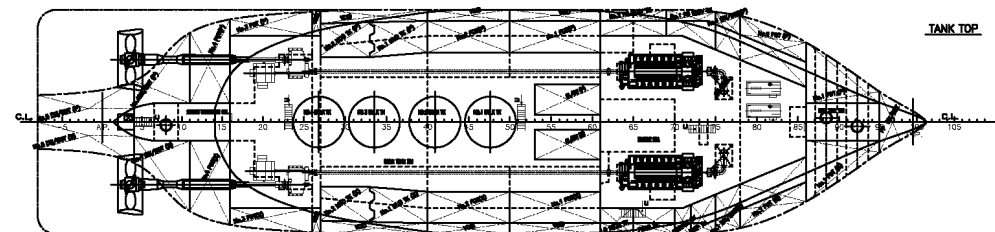
FRONT VIEW
(LOOKING AFT)



MIDSHIP SECTION
(LOOKING FORWARD)



AFT VIEW
(LOOKING FORWARD)



This drawing or document is the property of Universal Shipbuilding Corp. and must in no case wholly or partially be copied, shown or given to a third party without the expressed consent of Universal Shipbuilding Corp.

DESIGN DEPARTMENT	HULL No.	180T BP AHTS
APPROVED BY	SNo.0056/57	
CHECKED BY		
DESIGNED BY		
DRAWN BY		
DATE OF DESIGN	June 18, 2009	
SCALE	1/200	Universal Shipbuilding Corporation
GENERAL ARRANGEMENT		DWG. NO. 4011100-10
		REV. 1