

POSH Sandpiper (Draft Spec)



3,200 DWT/ Platform Supply Vessel(PSV)/ DP2 Call sign: TBA

Principal Particulars:

Flag	: Singapore
Year Built	: 2013
Place Built	: PaxOcean Engineering, Zhuhai, China
Length Overall	: 78.7 m
Length B.P.	: 70.1 m
Beam Overall	: 16.0 m
Depth Moulded	: 7.0 m
Design Draft	: 5.1 m
Scantling Draft	: 5.9 m
IMO No.	: TBA
Official No.	: TBA

Classification:

DNV +1A1, SF, E0, DK(+), HL(3.0), Dynpos AUTR, Clean design, LFL*, BIS, COMF V(3), NAUT OSV(A), Fire Fighter 1, OILREC

Capacities:

Gross Tonnage	: more than 2,000 T
Deadweight	: approx. 3,200 T
Fuel Oil	: 390 m ³ (dedicated tanks)
Fuel Oil	: 900 m ³ (incl. dual tanks)
Ballast/Drill Water	: 1,400 m ³
Cargo Fresh Water	: 450 m ³
Mud/Brine Tank	: 800 m ³ (sg.3,0t/m ³ -8 off cylindrical tanks)
Dry Bulk Cargo Tanks	: 250 m ³ in 5 tanks, 80psi/5.6bar cement/barite)
Special products	: 145m ² (methanol)
Deck Cargo Area	: 670 m ²
Cargo Deck Load	: 5t/ m ²

Speed/Fuel:

Max Speed	: 14.5 kts (Max Draft)
Cruising Speed	: 12.0 kts @ 5.0m draft
Economical Speed	: 12.0 kts @ 5.0m draft
Quality of Fuel	: MGO

Cargo Discharging Rates:

Ballast/Drill Water	: 150 m ³ /hr @ 9 bar
Fresh Water	: 150 m ³ /hr @ 9 bar
Fuel Oil	: 150 m ³ /hr @ 9 bar
Base Oil	: 100 m ³ /hr @ 9 bar
Methanol	: 75 m ³ /hr @ 9 bar
Brine	: 75 m ³ /hr @ 18 bar
Liquid mud (LM)	: 100 m ³ /hr @ 18 bar
1 Flowmeter with printer for filling & discharge purposes of B.O.	

Accommodation:

Accommodations for 26 people composed of:
8 x 1 man cabins; 9 x 2 man cabins; Galley, Provision Room,
Stores, Mess, Air conditional throughout
Cold room: 8.5m²; Refrigerator:10.0m²; Dry provision room: 11.0m²

Machinery & Equipment:

Main Diesel Generators	: 4 x 1,225BHP, 440V/60Hz, Caterpillar
Emergency Generators	: 1 x 130BHP, 440V/60Hz
Main Propulsion	: 2 x 1,997BHP
Bow Tunnel Thruster	: 2 x 950BHP, RRM TT1850 DPN CP @ 1200RPM

Deck Equipment:

Rescue Boat	: 1 x FRC with A-frame davit
Tugger Winch	: 1 x 10T pull @ 0-19 m/min; dia.380mm/dia.800mm x 55mm length
Deck Cargo Crane	: 5T @ 16m Odim ABAS, rotating knuckle boom
Anchors	: 2 x 2850kgs stockless bow anchors of "Spek" type
Anchor Windlass	: 1 x hyd.anchor windlass & mooring winch
Chain stopper	: 2 units, suitable for stud link chain to be fitted on A-deck
Capstans	: 2 x 8T pull @ 0-16m/min; dia.410mm x 575mm
Roll Reduction Sys.	: 1 Roll Stabilization tank

Dynamic Positioning System (Class 2):

DNV Classed DP2 Dynpos AUTR, Rolls Royce Icon, Poscon joystick system

Oil Pollution Control:

Dispersant

Lifesaving Equipment:

1 x Rigid FRC, handled by A-frame davit, 15 men capacity
Liferafts, lifejackets x 26 persons, lifebuoys

Electronics, Navigation & Communication Equipment:

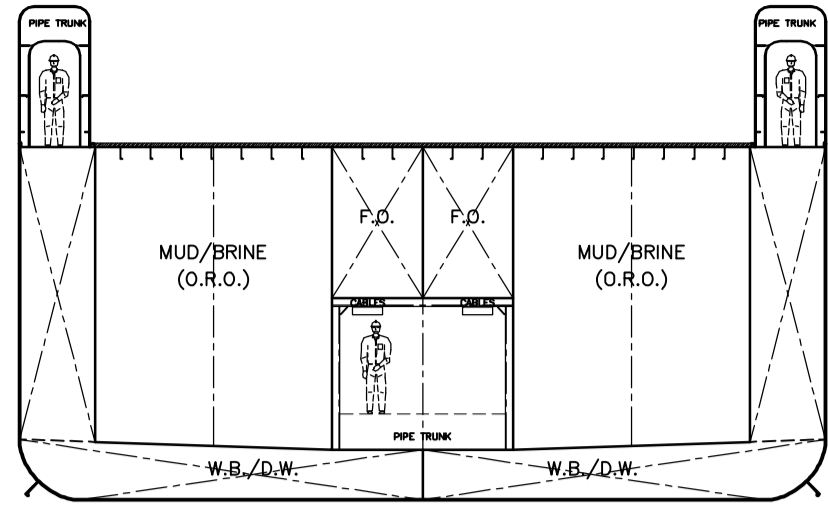
UHF	: 1
VHF	: 3
Autopilot	: 1
Radar ARPA	: 1 x S-band, 1 x X-band
Radar Transponders	: 2
DGPS	: 2
Echo Sounder	: 1
Speed Log	: 1
GMDSS	: 1 x area A3
Weather Fax	: 1
Navtex	: 1
PA/Loud Hailer	: 1



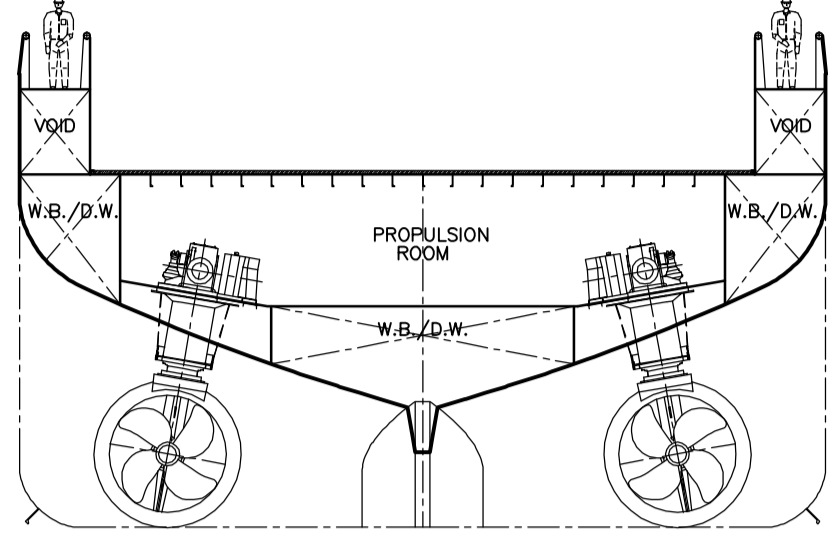
Rolls-Royce

UT-Design™

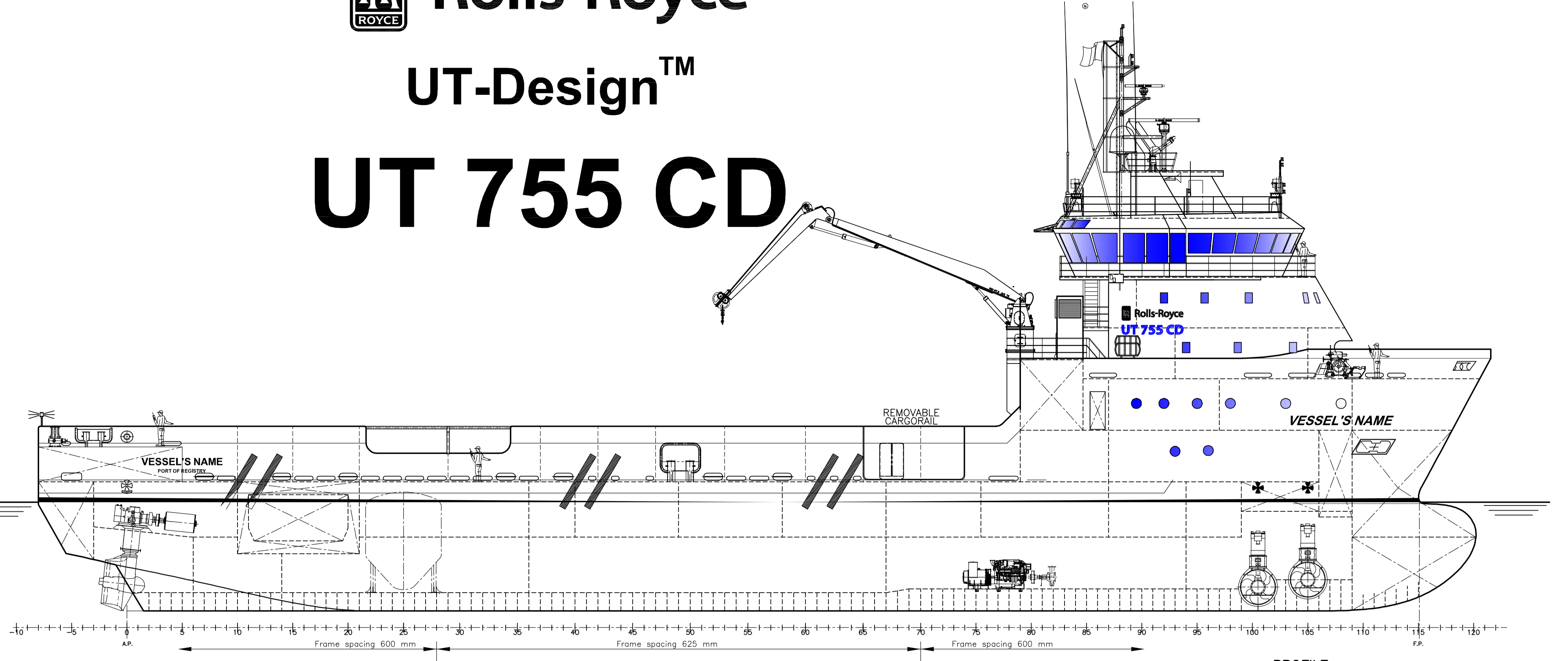
UT 755 CD



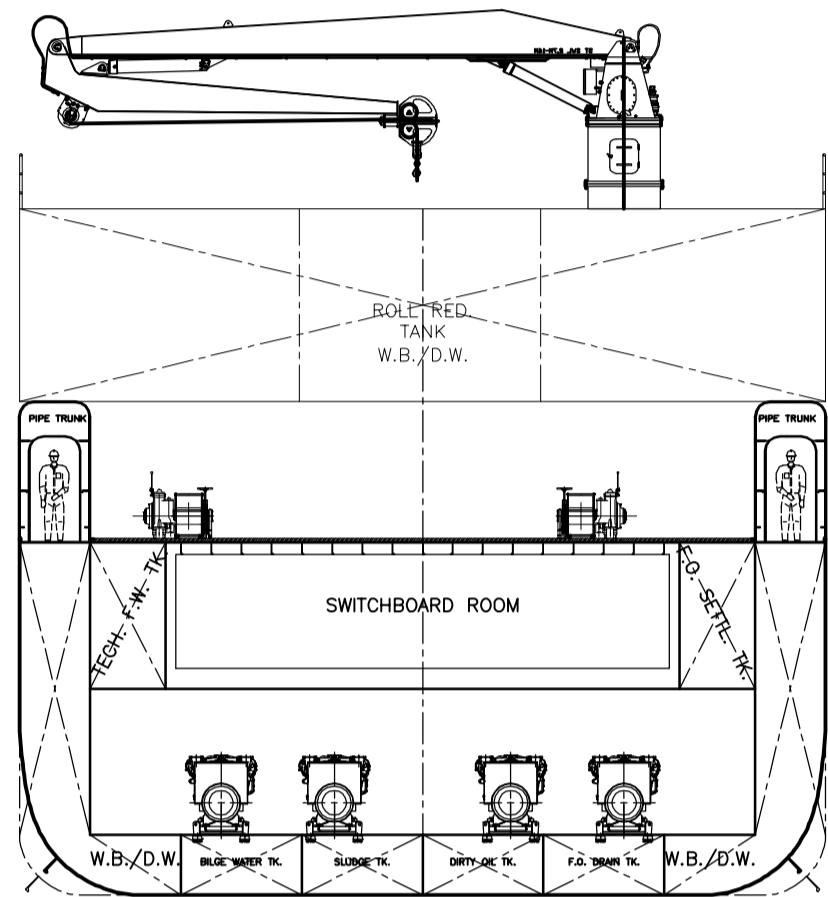
MIDSHIP SECTION



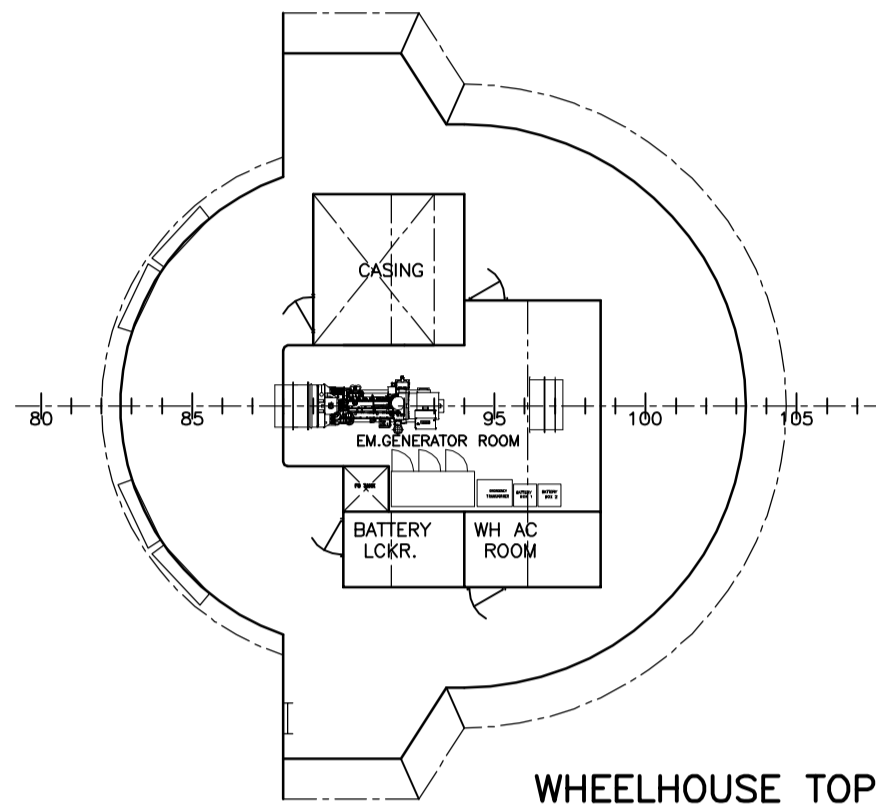
SECTION AZIMUTH UNITS



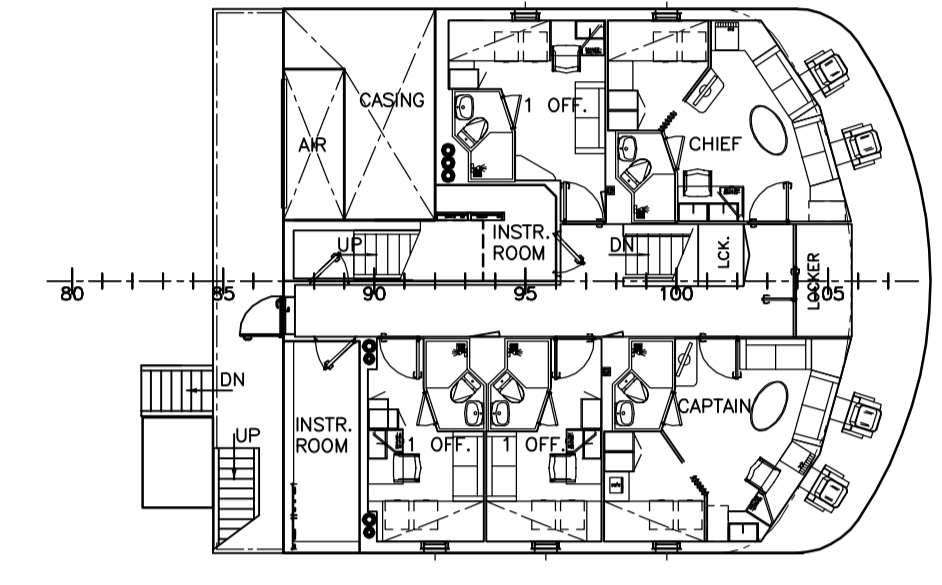
PROFILE



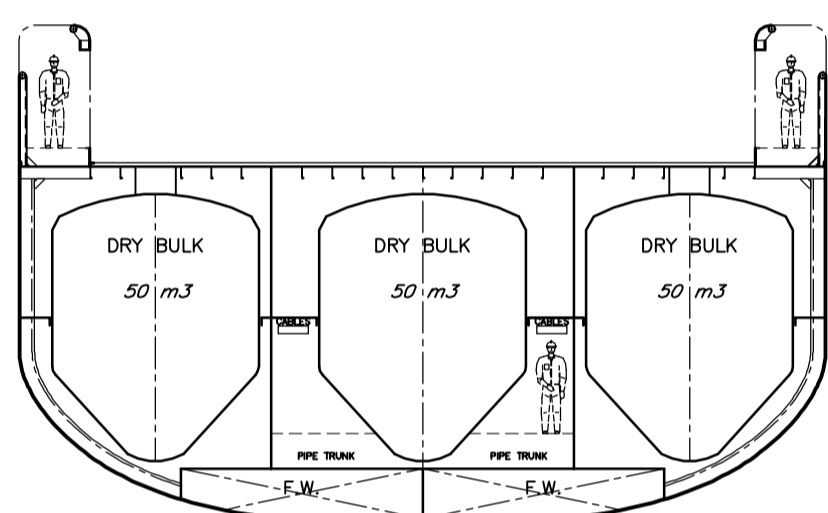
SECTION FRAME #73
LOOKING FORWARD



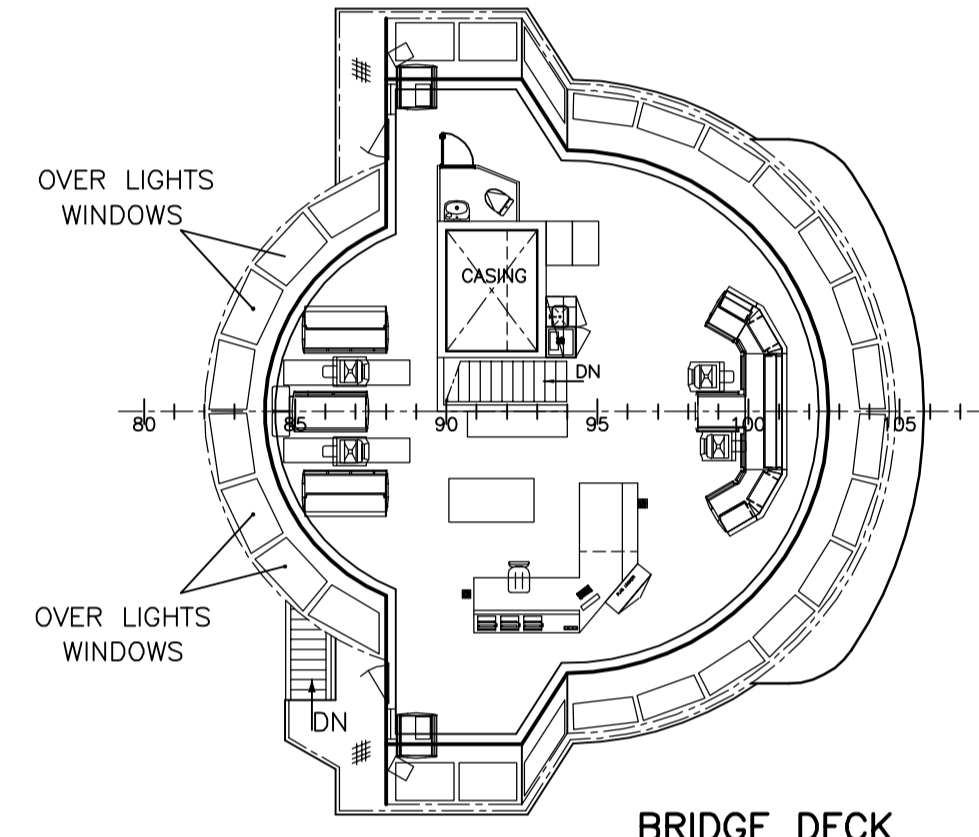
WHEELHOUSE TOP



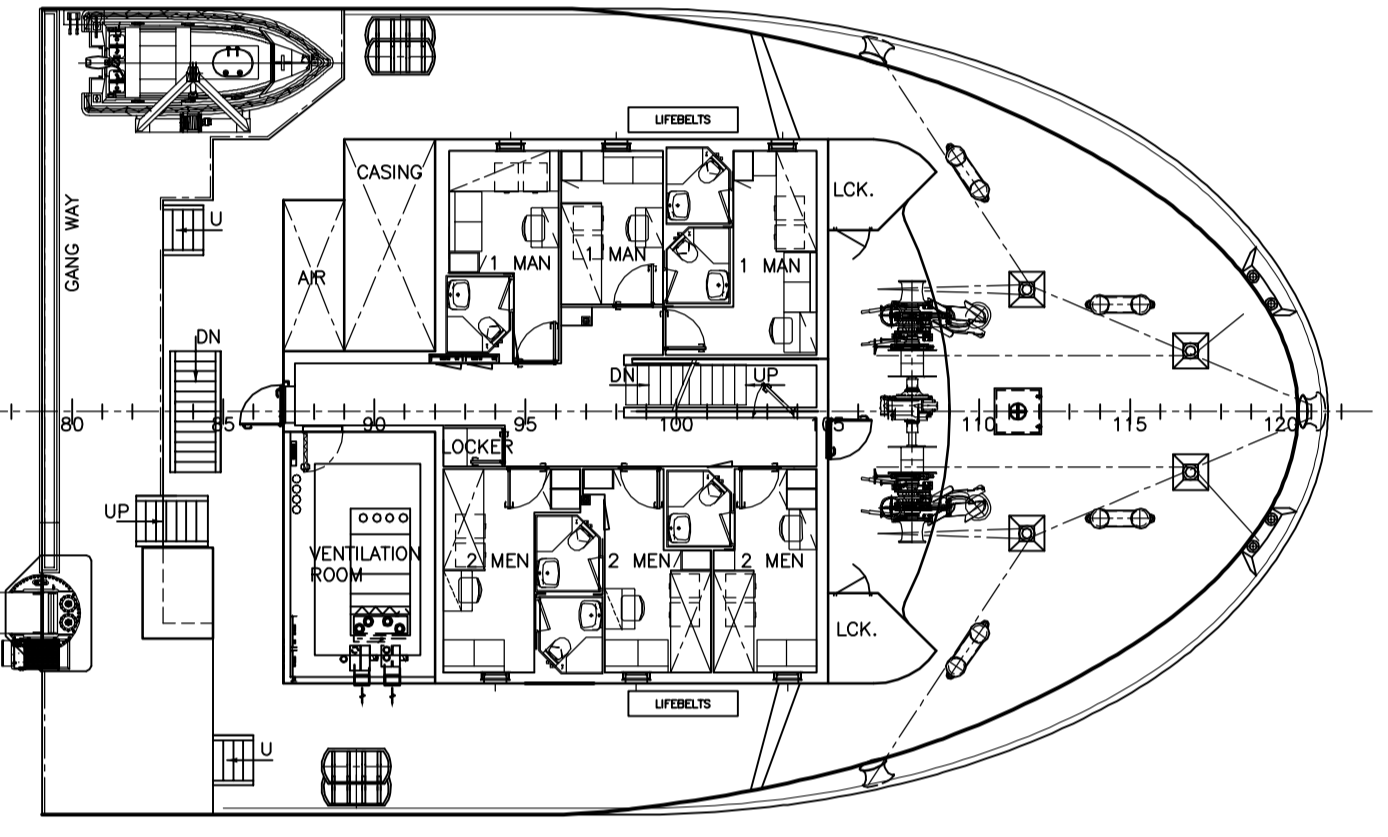
C-DECK (5)
5 x 1M



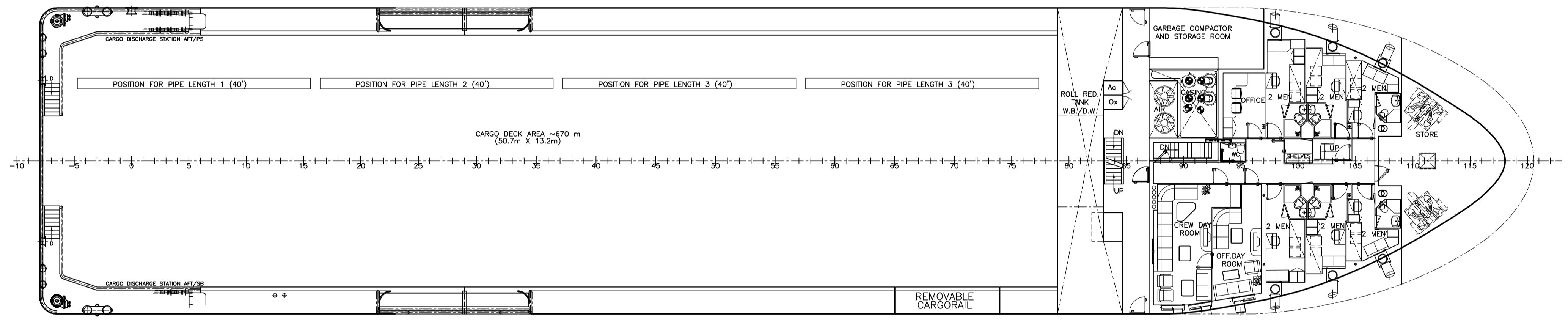
SECTION FRAME #25



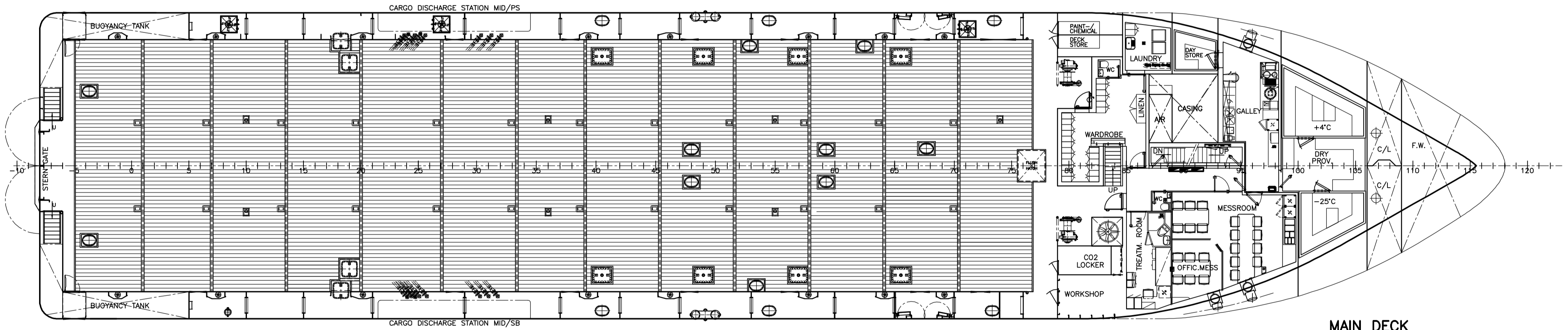
BRIDGE DECK



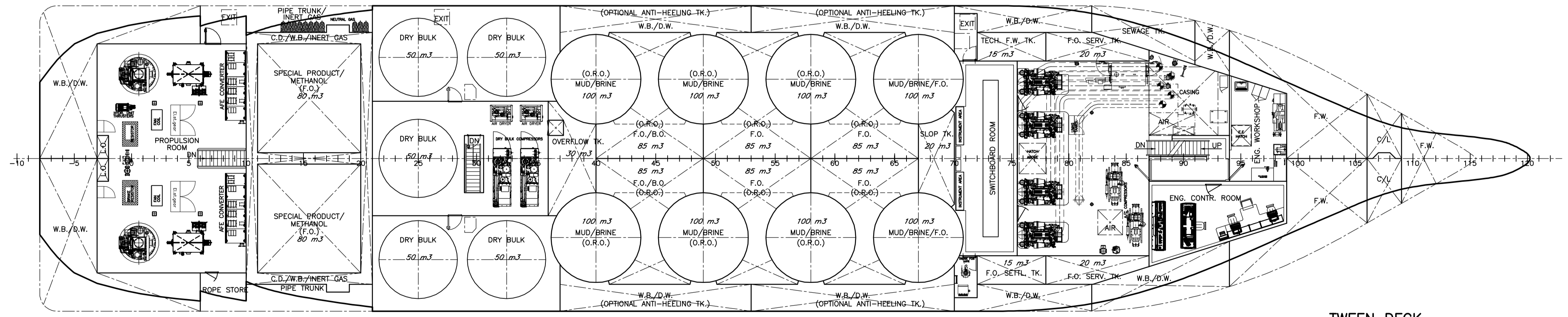
B-DECK (9)
3 x 2M
3 x 1M



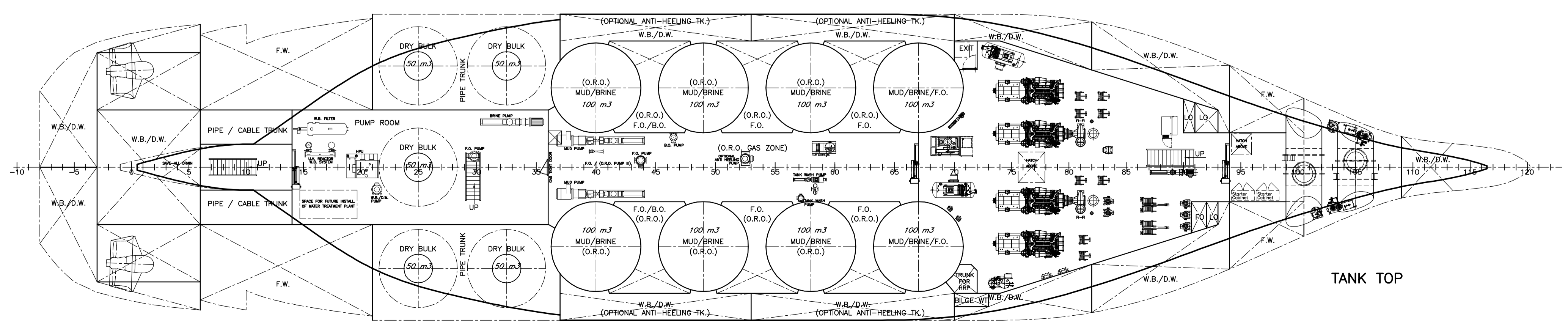
A-DECK (12)
6 x 2M



MAIN DECK



TWEEN DECK



TANK TOP

MAIN PARTICULARS

L.O.A. APPROX. 78.70 m

L.P.P. 70.10 m

BREADTH MLD. 16.00 m

DEPTH MAIN DK. 7.00 m

DESIGN DRAFT. 5.10 m

MAX DRAFT. APPROX. 5.80 m

NO.	REV.	DATE	DESCRIPTION
1	01	10/19/14	ISSUE
2	02	10/19/14	MODIFIED ACCORDING TO YARD COMMENT
3	03	10/19/14	FINAL ISSUE

Rolls-Royce
UT-Design™

GENERAL ARRANGEMENT

1:150 AD 107194 - 101 - 001 B