

POSH Shearwater (Draft Spec)



3,200 DWT/ Platform Supply Vessel(PSV)/ DP2 Call sign: TBA

Principal Particulars:

| | |
|-----------------|---------------------------------------|
| Flag | : Singapore |
| Year Built | : 2012 |
| Place Built | : PaxOcean Engineering, Zhuhai, China |
| Length Overall | : 78.7 m |
| Length B.P. | : 70.1 m |
| Beam Overall | : 16.0 m |
| Depth Moulded | : 7.0 m |
| Design Draft | : 5.1 m |
| Scantling Draft | : 5.9 m |
| IMO No. | : TBA |
| Official No. | : TBA |

Classification:

DNV +1A1, SF, E0, DK(+), HL(3.0), Dynpos AUTR, Clean design, LFL*, BIS, COMF V(3), NAUT OSV(A), Fire Fighter 1, OILREC

Capacities:

| | |
|----------------------|--|
| Gross Tonnage | : more than 2,000 T |
| Deadweight | : approx. 3,200 T |
| Fuel Oil | : 390 m ³ (dedicated tanks) |
| Fuel Oil | : 900 m ³ (incl. dual tanks) |
| Ballast/Drill Water | : 1,400 m ³ |
| Cargo Fresh Water | : 450 m ³ |
| Mud/Brine Tank | : 800 m ³ (sg.3,0t/m ³ -8 off cylindrical tanks) |
| Dry Bulk Cargo Tanks | : 250 m ³ in 5 tanks, 80psi/5.6bar cement/barite) |
| Special products | : 145m ² (methanol) |
| Deck Cargo Area | : 670 m ² |
| Cargo Deck Load | : 5t/ m ² |

Speed/Fuel:

| | |
|------------------|-------------------------|
| Max Speed | : 14.5 kts (Max Draft) |
| Cruising Speed | : 12.0 kts @ 5.0m draft |
| Economical Speed | : 12.0 kts @ 5.0m draft |
| Quality of Fuel | : MGO |

Cargo Discharging Rates:

| | |
|---|-----------------------------------|
| Ballast/Drill Water | : 150 m ³ /hr @ 9 bar |
| Fresh Water | : 150 m ³ /hr @ 9 bar |
| Fuel Oil | : 150 m ³ /hr @ 9 bar |
| Base Oil | : 100 m ³ /hr @ 9 bar |
| Methanol | : 75 m ³ /hr @ 9 bar |
| Brine | : 75 m ³ /hr @ 18 bar |
| Liquid mud (LM) | : 100 m ³ /hr @ 18 bar |
| 1 Flowmeter with printer for filling & discharge purposes of B.O. | |

Accommodation:

Accommodations for 26 people composed of:
8 x 1 man cabins; 9 x 2 man cabins; Galley, Provision Room,
Stores, Mess, Air conditional throughout
Cold room: 8.5m²; Refrigerator:10.0m²; Dry provision room: 11.0m²

Machinery & Equipment:

| | |
|------------------------|---|
| Main Diesel Generators | : 4 x 1,225BHP, 440V/60Hz, Caterpillar |
| Emergency Generators | : 1 x 130BHP, 440V/60Hz |
| Main Propulsion | : 2 x 1,997BHP |
| Bow Tunnel Thruster | : 2 x 950BHP, RRM TT1850 DPN CP @ 1200RPM |

Deck Equipment:

| | |
|---------------------|--|
| Rescue Boat | : 1 x FRC with A-frame davit |
| Tugger Winch | : 1 x 10T pull @ 0-19 m/min; dia.380mm/dia.800mm x 55mm length |
| Deck Cargo Crane | : 5T @ 16m Odim ABAS, rotating knuckle boom |
| Anchors | : 2 x 2850kgs stockless bow anchors of "Spek" type |
| Anchor Windlass | : 1 x hyd.anchor windlass & mooring winch |
| Chain stopper | : 2 units, suitable for stud link chain to be fitted on A-deck |
| Capstans | : 2 x 8T pull @ 0-16m/min; dia.410mm x 575mm |
| Roll Reduction Sys. | : 1 Roll Stabilization tank |

Dynamic Positioning System (Class 2):

DNV Classed DP2 Dynpos AUTR, Rolls Royce Icon, Poscon joystick system

Oil Pollution Control:

Dispersant

Lifesaving Equipment:

1 x Rigid FRC, handled by A-frame davit, 15 men capacity
Liferafts, lifejackets x 26 persons, lifebuoys

Electronics, Navigation & Communication Equipment:

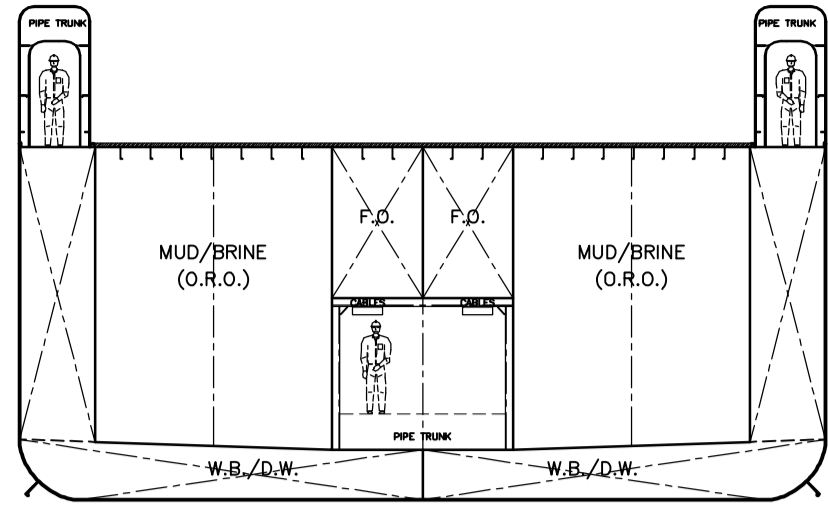
| | |
|--------------------|--------------------------|
| UHF | : 1 |
| VHF | : 3 |
| Autopilot | : 1 |
| Radar ARPA | : 1 x S-band, 1 x X-band |
| Radar Transponders | : 2 |
| DGPS | : 2 |
| Echo Sounder | : 1 |
| Speed Log | : 1 |
| GMDSS | : 1 x area A3 |
| Weather Fax | : 1 |
| Navtex | : 1 |
| PA/Loud Hailer | : 1 |



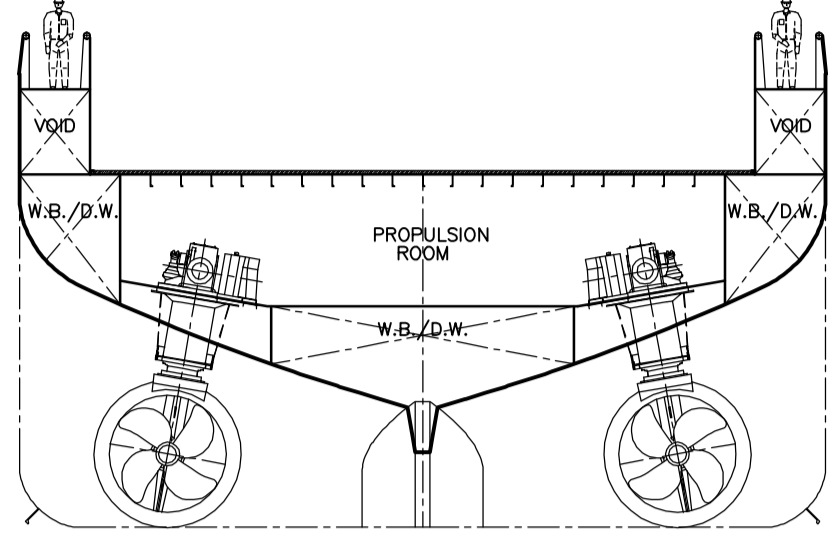
Rolls-Royce

UT-Design™

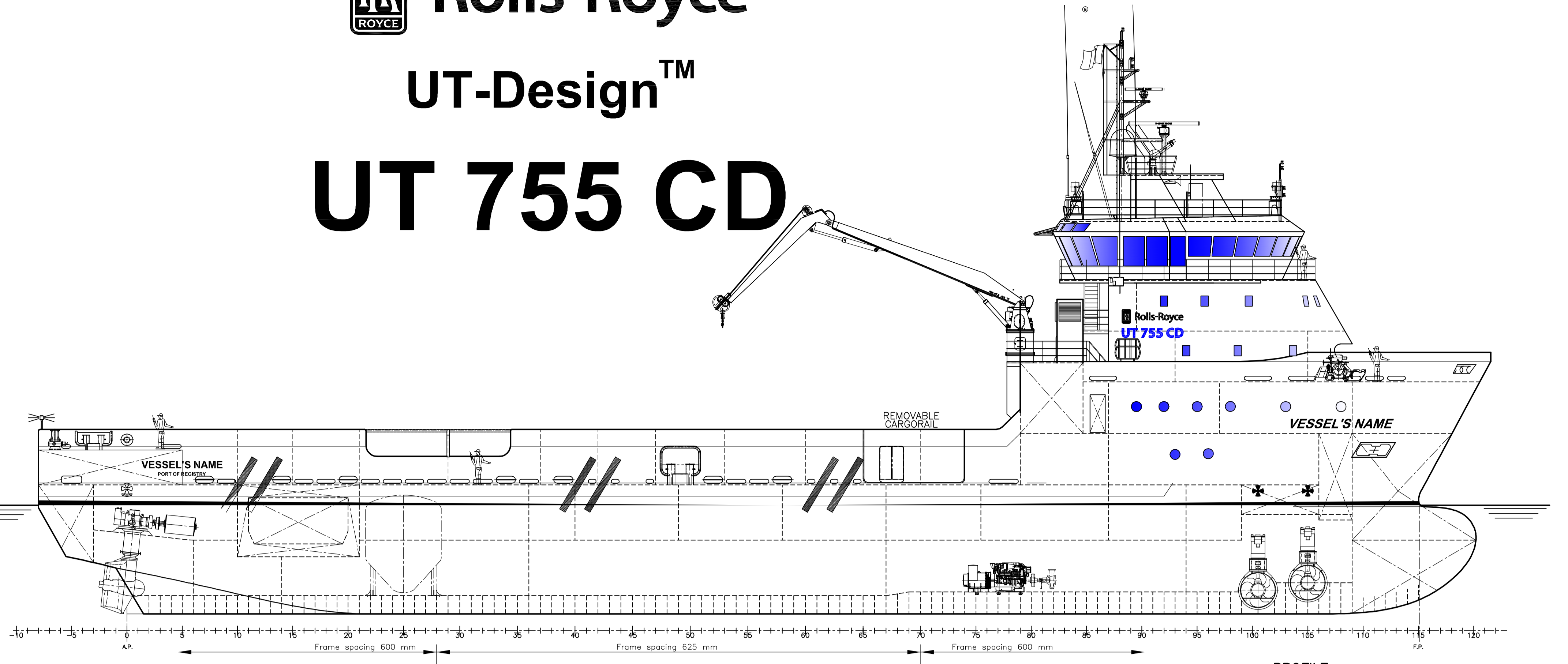
UT 755 CD



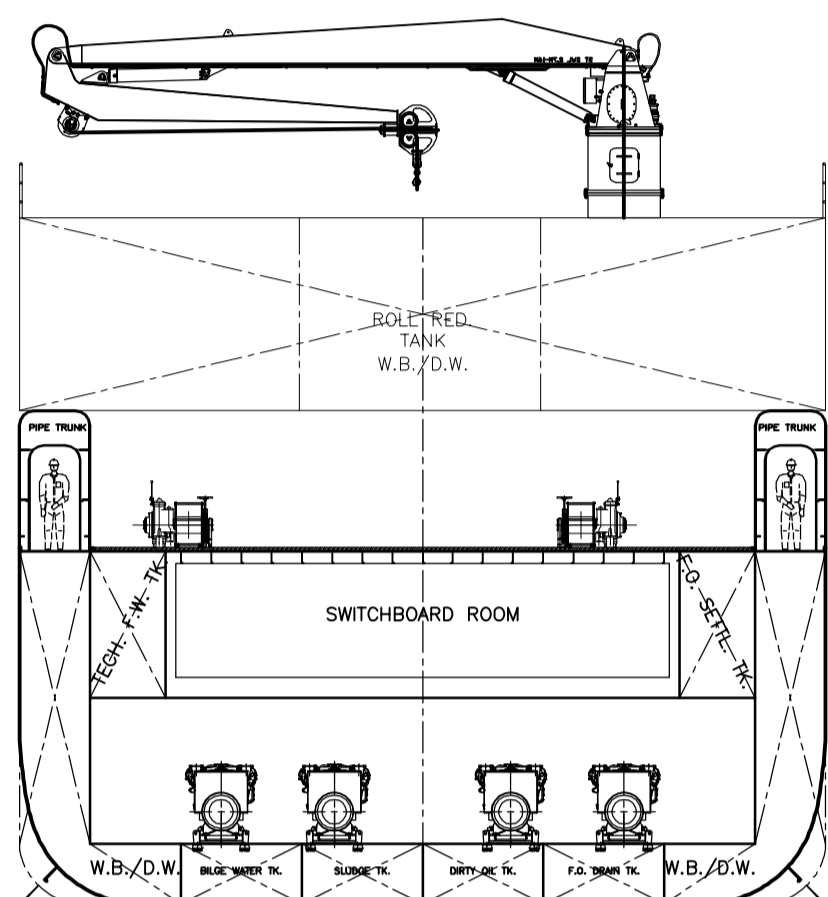
MIDSHIP SECTION



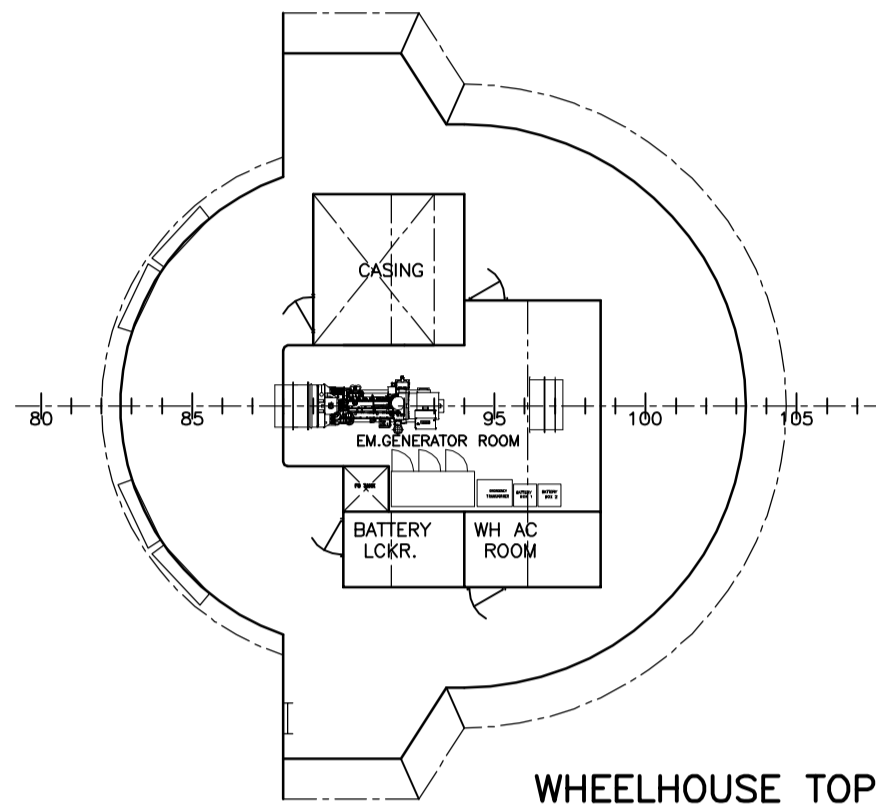
SECTION AZIMUTH UNITS



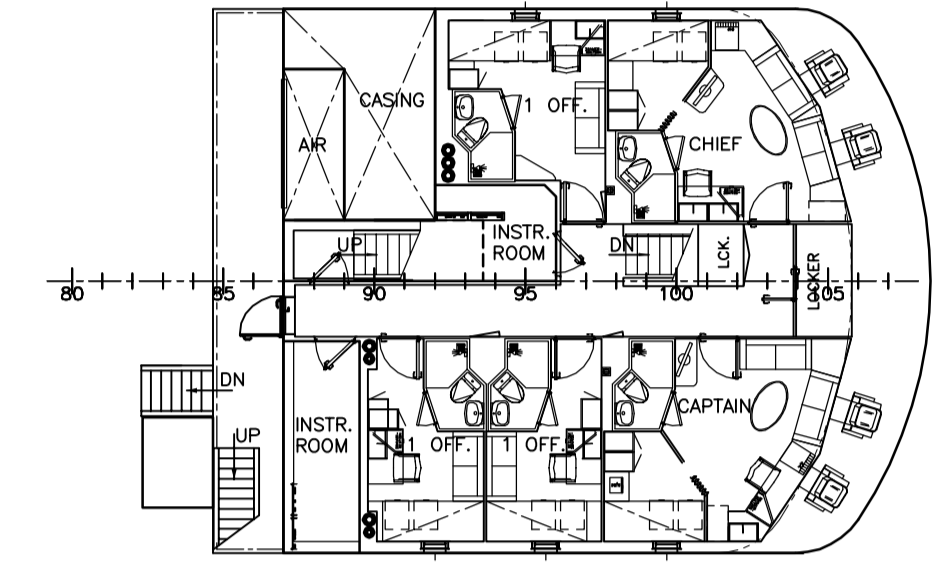
PROFILE



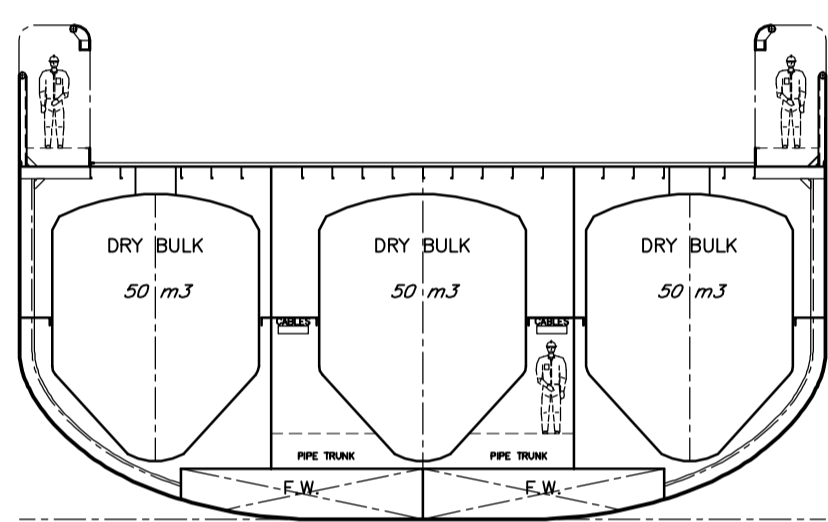
SECTION FRAME #73
LOOKING FORWARD



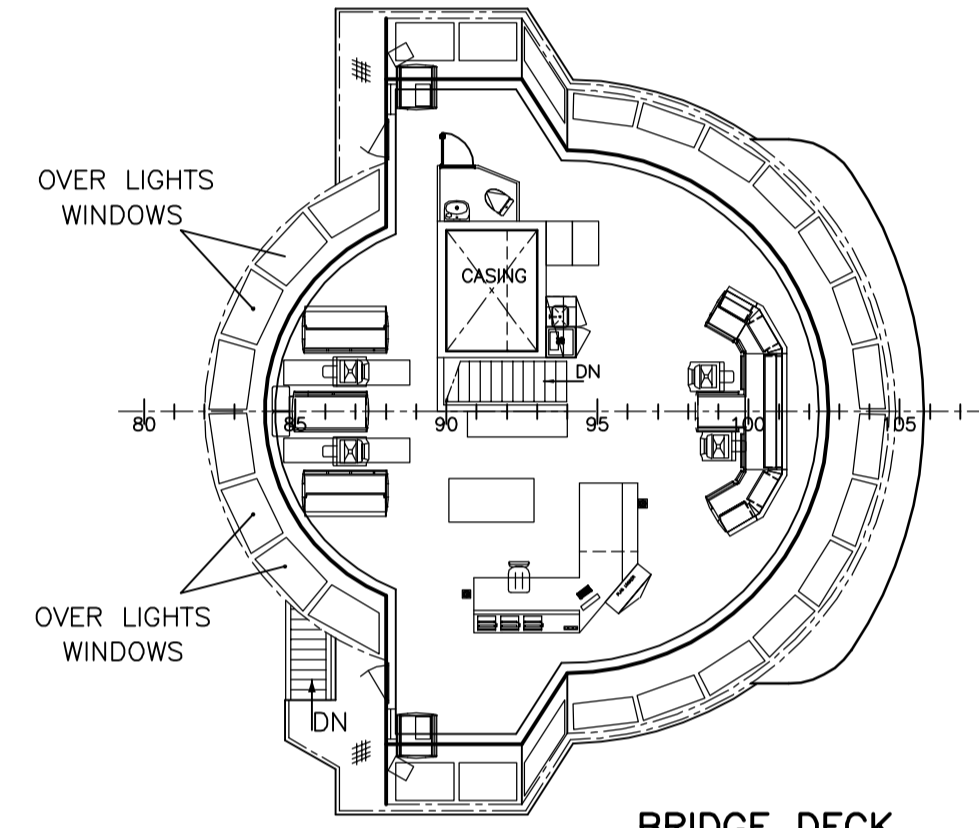
WHEELHOUSE TOP



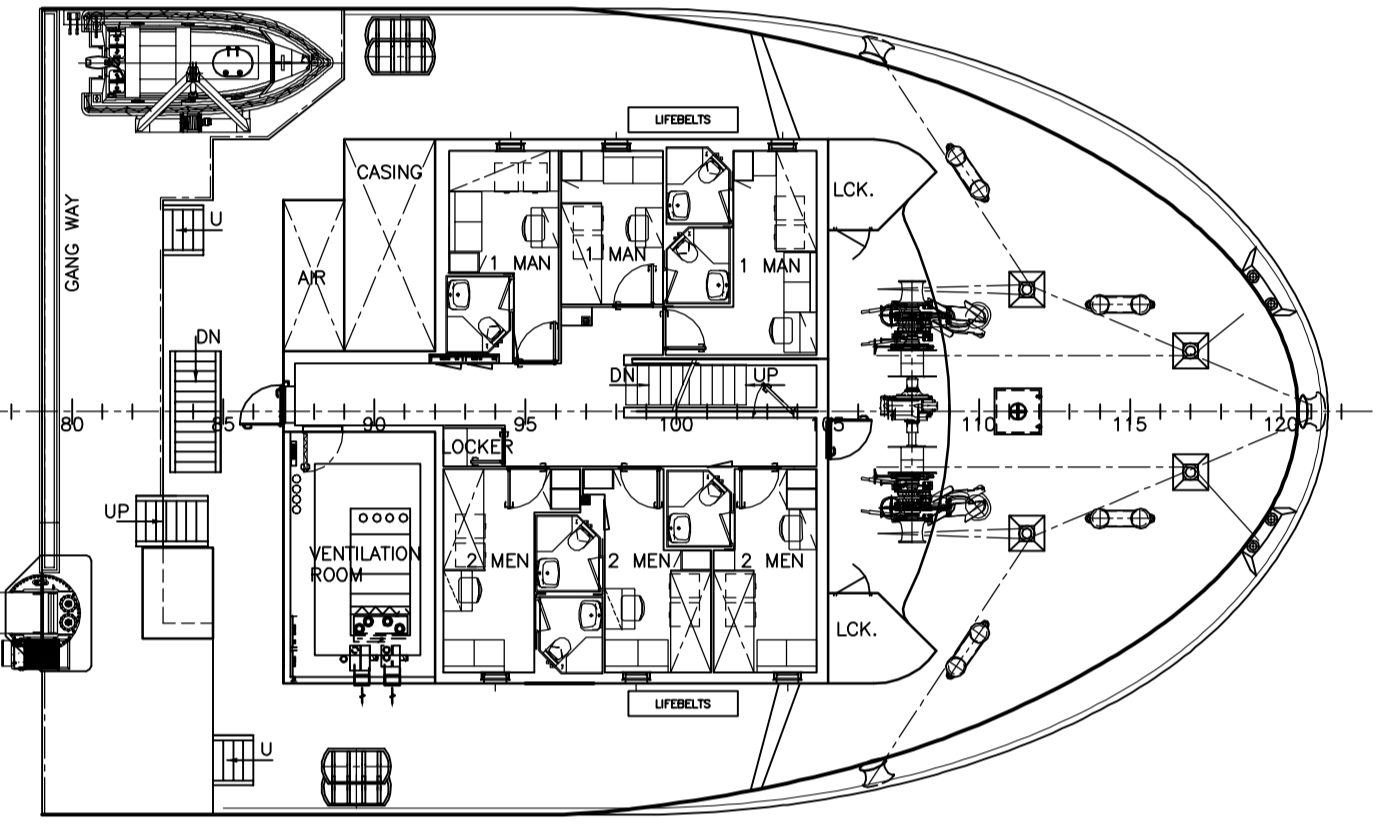
C-DECK (5)
5 x 1M



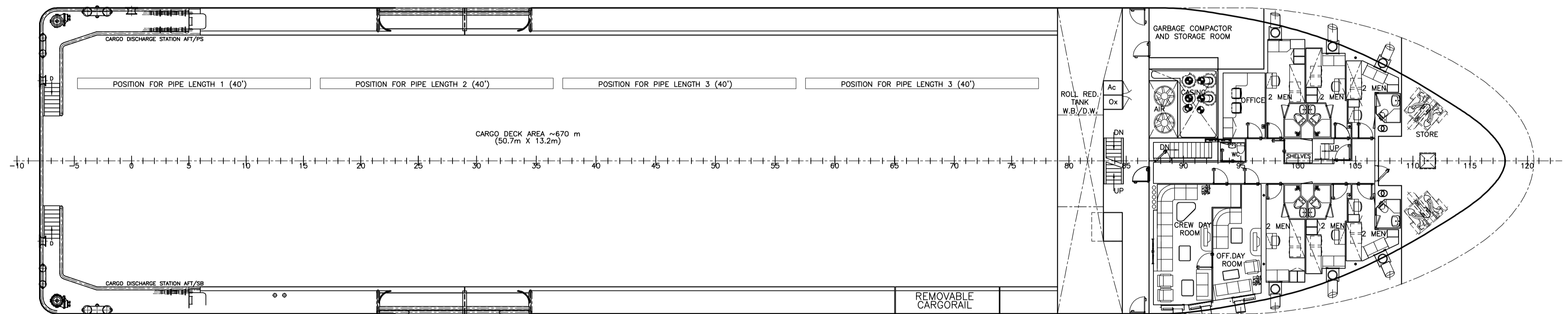
SECTION FRAME #25



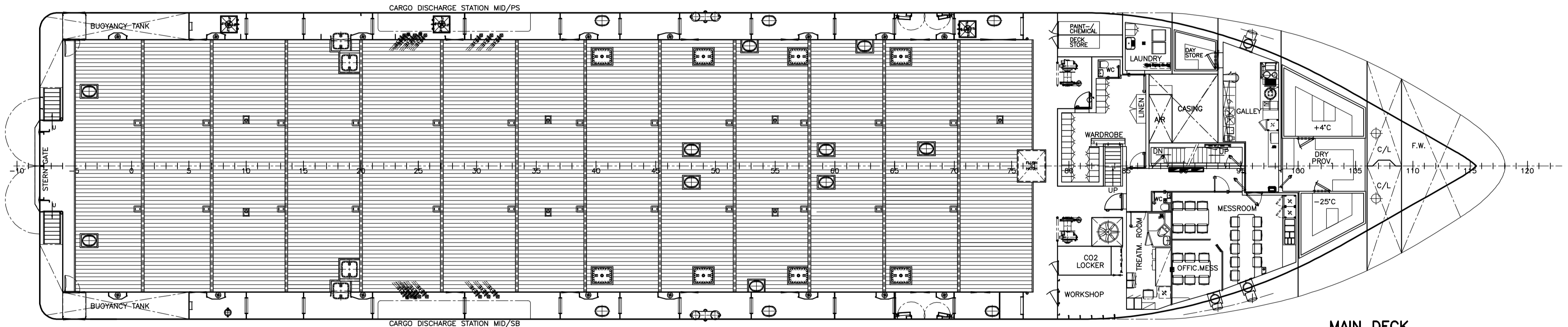
BRIDGE DECK



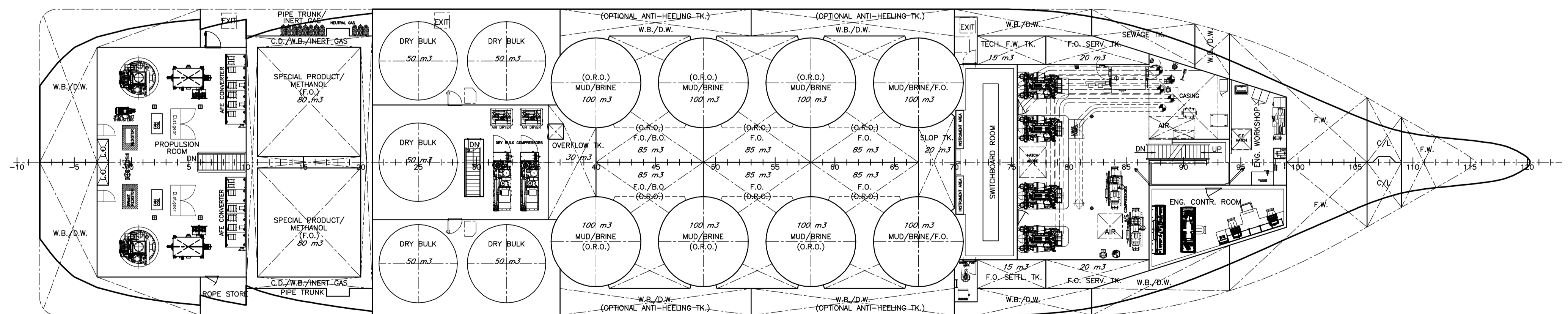
B-DECK (9)
3 x 2M
3 x 1M



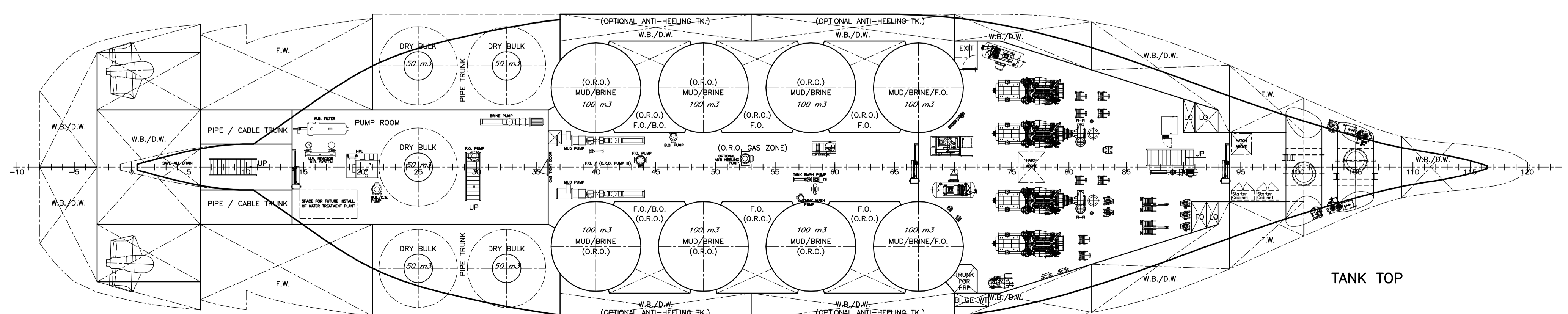
A-DECK (12)
6 x 2M



MAIN DECK



TWEEN DECK



TANK TOP

MAIN PARTICULARS

L.O.A. APPROX. 78.70 m

L.P.P. 70.10 m

BREADTH MLD. 16.00 m

DEPTH MAIN DK. 7.00 m

DESIGN DRAFT. 5.10 m

MAX DRAFT. APPROX. 5.80 m

| | | | | |
|------|----------|------------------------------------|-----|-------|
| REV. | DATE | DESCRIPTION | BY | CHKD. |
| B | 01.12.10 | CONTRACT GA | TT | |
| A | 08.11.10 | MODIFIED ACCORDING TO YARD COMMENT | TT | |
| D | 28.09.10 | FIRST ISSUE | JFM | |

Rolls-Royce
UT-Design™

GENERAL ARRANGEMENT

1:150 AD 107194 - 101 - 001 B