

SALVICEROY



12,000 BHP / 156 TBP AHT / Ocean Towing / Salvage Tug Call Sign: S6HA6

Principal Particulars

Flag	: Singapore
Year Built	: 2007
Place Built	: Japan
Length Overall	: 68 m
Length B.P.	: 60 m
Breadth Moulded	: 16.4 m
Depth Moulded	: 7.2 m
Design Draft	: 5.2 m
IMO No.	: 9351830
Official No.	: 392060

Classification

ABS + A1 (E) + AMS, "TOWING VESSEL"

Capacities

Gross Tonnage	: 2658 tons
Nett Tonnage	: 797 tons
Deadweight at 6.00 m	: 2804 tons
Heavy Fuel	: 2050 cbm
Diesel Oil	: 200 cbm
Water ballast Tank	: 1000 cbm
Fresh Water	: 185 cbm
Foam	: 13 cbm
Oil Dispersant	: 13 cbm
Free Deck Space	: 350 sqm
Speed at design draft	: 15 knots
Bollard Pull	: 156 tons

Accommodation

One Man Cabin	: 6
Two Men Cabin	: 5
Four Men Cabin	: 5
Total Complement	: 36 men

Machinery & Deck Equipment

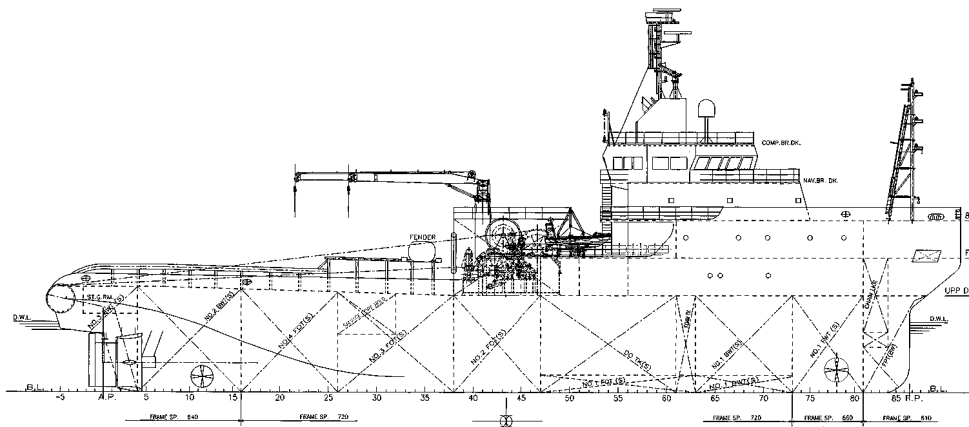
Main Engines	: Wartsila 9L32, 2x4,500 kW @ 750 Rpm
Propellers	: CPP in Nozzles (Lips)
Generators	: 2 x Diesel Main Generator 330 kw each 415v 3 Phase 50 hz 2 x Shaft Generator 1200 kw each 415v 3 Phase 50 hz 1 x Emergency Generator 60 kw 415v 3 Phase 50 hz
Bow Thruster	: 800 kW @ 12 tons thrust
Stern Thruster	: 588 kW @ 9.2 tons thrust
Deck Crane	: 1x hydraulic telescopic crane, 2tons x 14m

Towing/Anchor Handling

Towing Winch	: Hydraulic Waterfall Double Drum Type Brake Holding Capacity @ 400 tons
Towing Wires	: 2x 1500 m x 76 mm Dia towing wires
Recovery Winch/tugger	: 2 x 20 ton electro-hydraulic winches with drum of 400m x 38mm dia
Storage reel	: 1 off 1500 m x 76 mm dia
Shark Jaw	: SWL 350 tons, hydraulic retractable type
Towing pin	: SWL 200 tons, hydraulic retractable type
Capstan	: 2 x 10 tons electro-hydraulic type
Sternroller	: SWL 350 tons 2.5 m x 2000 mm dia
Anchor Windlass	: Hydraulic type with cable lifter & warping head. 2 x rope drums @ 10 ton x 9 m/min

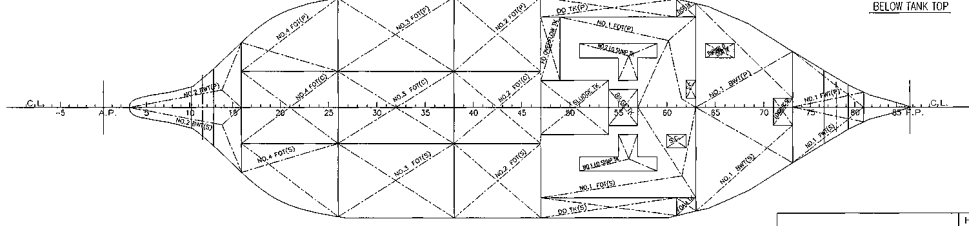
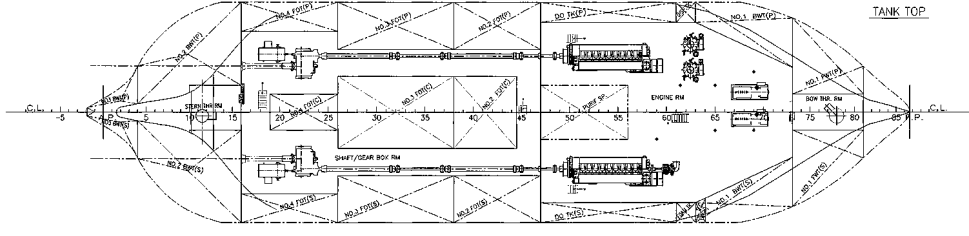
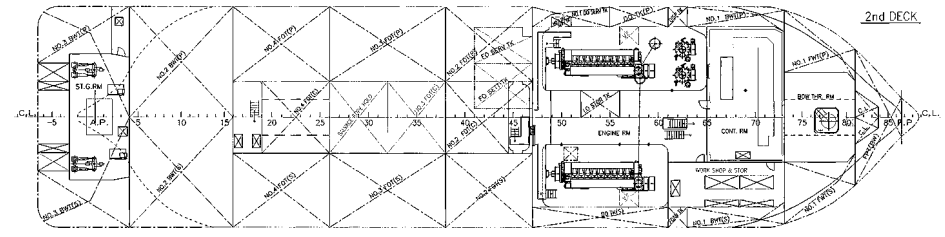
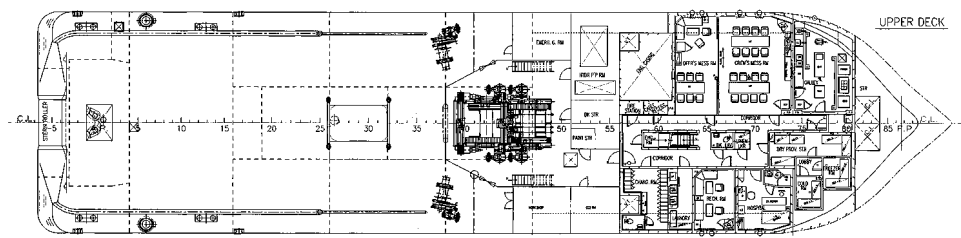
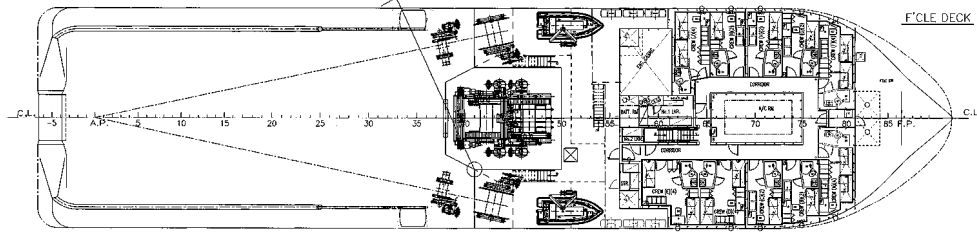
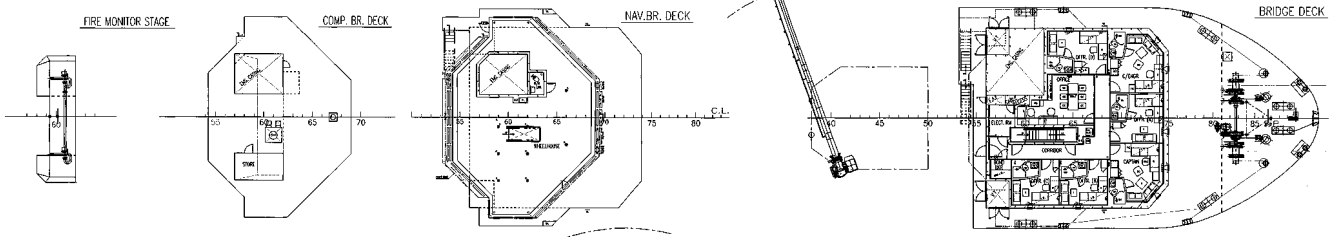
FiFi ½ System

External Fire-fighting	: FiFi ½, 2 x dual foam/water monitor @600cum/hr each.
------------------------	---



PRINCIPAL PARTICULARS

LENGTH(O.A)	APPROX. 68.0m
LENGTH(B.P)	60.00m
BREADTH(MLD)	16.40m
DEPTH(MLD)	7.20m
DRAFT (DESIGN) (MLD)	5.20m
DRAFT (SCANT.) (MLD)	5.00m
CLASS	ABS TOWING VESSEL



DESIGN DEPARTMENT	HULL No. 0025/0026	150T BP OCEAN TOWING and SALVAGE TUG
APPROVED BY <i>M. Legawa</i>	GENERAL ARRANGEMENT	
CHECKED BY <i>M. Legawa</i>		
CHECKED BY <i>S. Gabelo</i>		
DESIGNED BY		
DRAWN BY <i>J. Kurita</i>	DATE OF DRAWING Sep. 29, 2005	DWG. NO. 4011100
SCALE 1/200	Universal Shipbuilding Corporation	REV. 0