

SALVANGUARD



13,500 BHP/ 158 TBP AHT/ Ocean Towing/ Salvage Tug Call Sign: 9V6418

Principal Particulars

Flag	: Singapore
Year Built	: 2004
Place Built	: Singapore
Length Overall	: 75.00 m
Length B.P.	: 66.60 m
Beam Overall	: 18.00 m
Depth Moulded	: 8.00 m
Design Draft	: 6.00 m
IMO No.	: 9276664
Official No.	: 390204

Classification

LRS + 100A1 Tug, Fire Fighting Ship 1 (2,400m³/hr) with Water Spray, SCM + LMC

Capacities

Gross Tonnage	: 3342 tons
Net Tonnage	: 1002 tons
Deadweight	: 2700 tons
Heavy Fuel Oil	: 2200 m ³
Diesel Fuel Oil	: 330 m ³
Potable Water	: 200 m ³
Lube Oil	: 10 m ³
Foam Capacity	: 8 m ³
Dispersant	: 8 m ³
Speed	: 15 knots
Endurance	: 40 days towing at sea
Deck Loads	: 5 tons / m ²
Deck Space	: 341m ²

Accommodation

One Man Cabin	: 6
Two Men Cabin	: 3
Four Men Cabin	: 6
Total Complement	: 36 men

Machinery & Equipment

Main Engines	: 4 x Wartsila VASA 6R32LNE Total output 13,500BHP @750RPM
Generators	: 2 x 1200kW Shaft generators @415V 3Ph 50Hz : 2 x 350kW @1800RPM @415V 3Ph 50Hz : 1 x 105kW @1800RPM.
Propellers	: Twin screw Controllable Pitch (Lips)
Bollard Pull	: 158 tons
Bow Thruster	: 1 x Lips 12 tons
Stern Thruster	: 1 x Lips 10 tons
Deck Crane	: 2 x Electro-hydraulic 360° slewing each 8 tons SWL @ 7m

Tow/Anchor handling Equipment

Tow/AH Winch	: Brattvaag Hydraulic Triple Drum, Waterfall Type. Brake holding capacity @400 tons. 2 x declutchable anchor handling drum for dia 76mm, 1500m wire. 1 x declutchable towing drum for dia 76mm, 1500m wire. Two non declutchable hardwelded cable lifters for 84mm chain fitted outside of the anchor handling drum
Tugger Winch	: 2 x Electro-hydraulic, each 10 tons @15m/min
Shark Jaw	: 1 x Triplex H350, 300 tons SWL
Guide Pin	: 1 x Triplex S200, 200 tons SWL
Capstans	: 2 x Electro-hydraulic each 8 tons @0-18m/min.
Stern Roller	: 1 x 300 tons SWL, 5.5m x dia 3m
Chain Lockers	: 2 @5400mm x 3300mm x 8000mm. Capacity 142.56 m ³

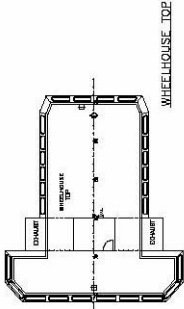
FiFi 1 System

Fire Pump	: Two seawater centrifugal pumps, each capacity of 1683m ³ /hr @ pump speed of 1800RPM
Fire Monitor	: Two dual foam/water monitor each capacity of 1200 m ³ /hr at 11.5 bars

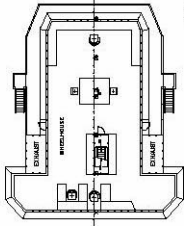
PRINCIPAL DIMENSIONS

LENGTH O.A (MLD. HULL) _____ 75.00M
 LENGTH PERPENDICULAR _____ 66.73M
 BREADTH MLD. _____ 18.00M
 DEPTH MLD. _____ 8.00M
 DESIGN DRAFT _____ 6.00M
 SPEED _____ 14 KNOTS
 BOLLARD PULL _____ ABT. 160 TONNES
 MAIN ENGINE POWER _____ 4x3350 BHP
 _____ @ 750 RPM
 COMPLEMENT _____ 36 MEN
 H.F.O. _____ ABT. 2400 M³
 FRESH WATER _____ ABT. 200 M³
 M.D.O. _____ ABT. 200 M³
 FOAM _____ ABT. 8,000 LITRES
 DISPERSANT _____ ABT. 8,000 LITRES

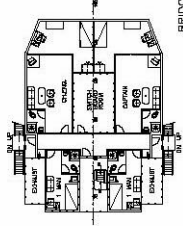
CLASS: LBS 100 A1 TUG, FIRE-FIGHTING SHIP1 (2400M3/HR)
 WITH WATER SPRAY, SHIP RIGHT SCM+LCM



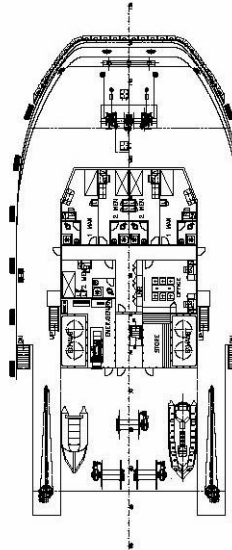
WHEELHOUSE TOP



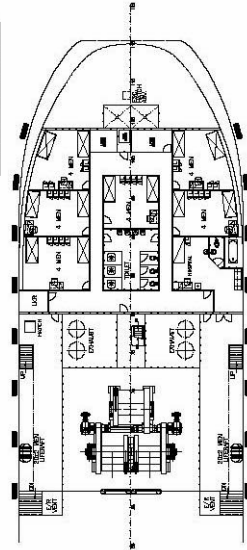
BRIDGE DECK



BRIDGE DECK



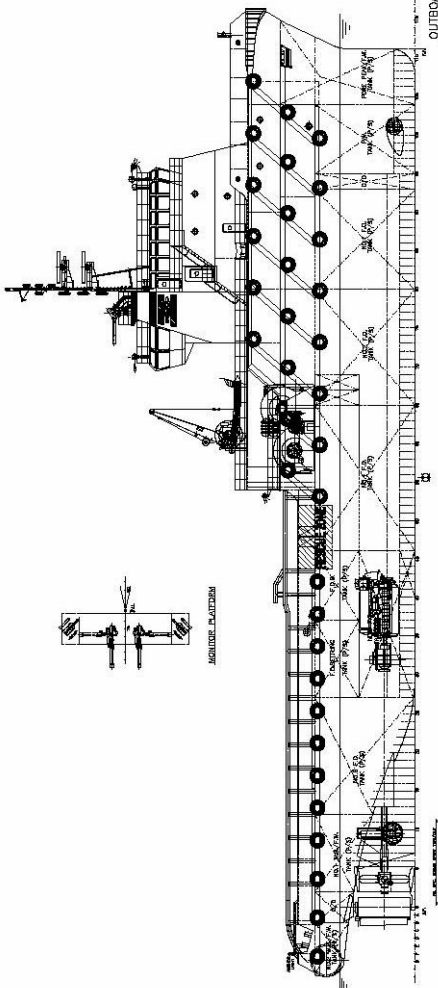
UPPER FORECASTLE DECK



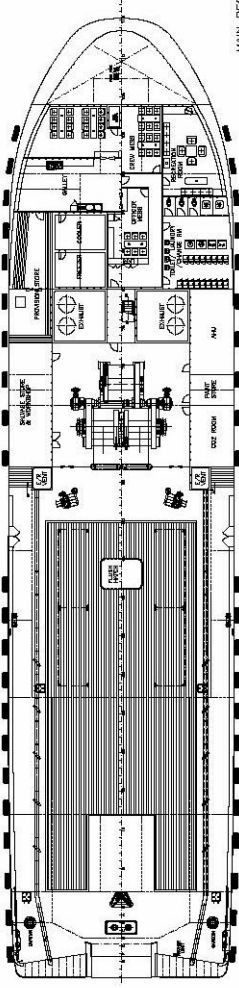
FORECASTLE DECK

NO.	DATE	APPROVED
1		
2		
3		
4		
5		

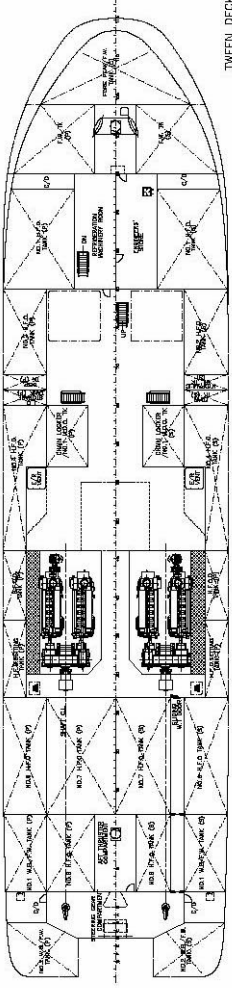
THIS DOCUMENT AND THE INFORMATION CONTAINED HEREIN IS UNCLASSIFIED EXCEPT WHERE SHOWN OTHERWISE. IT IS THE PROPERTY OF SEMCO SALVAGE & MARINE PTE. LTD. AND IS NOT TO BE REPRODUCED OR TRANSMITTED IN ANY FORM OR BY ANY MEANS, ELECTRONIC OR MECHANICAL, INCLUDING PHOTOCOPYING, RECORDING, OR BY ANY INFORMATION STORAGE AND RETRIEVAL SYSTEM WITHOUT THE WRITTEN PERMISSION OF SEMCO SALVAGE & MARINE PTE. LTD.



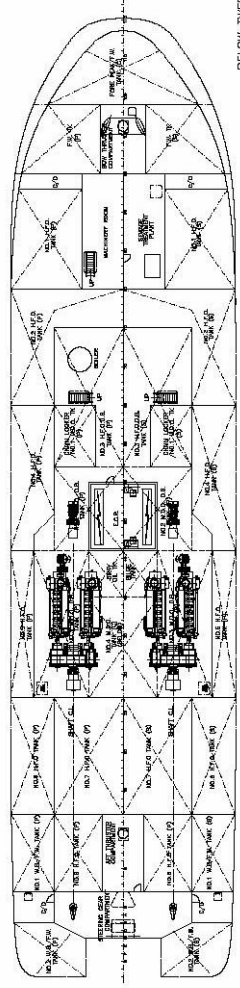
OUTBOARD PROFILE



MAIN DECK



TWEEN DECK



BELOW TWEEN DECK

OWNER	NO. OF SHEETS	BY	DATE
SEMCO SALVAGE & MARINE PTE. LTD.			
VUYA KENTON Singapore Pte. Ltd. An International Marine Services Firm, since 1968 100 Robinson Road, #05-01 Singapore 068972 Tel: +65 6336 8222 Fax: +65 6336 8220 E-mail: vuyak@vuyak.com.sg			
PROJECT		75.0M SALVAGE TUG	
TITLE		GENERAL ARRANGEMENT	
DATE:	20.11.2001	NO. OF SHEETS:	1/200
DRAWN BY:	HEM	PROJECT NO.:	8039
CHECKED BY:		DRAWING NO.:	8039-1
		SHEET NO. 1	