

POSH VIBRANT



8,000 BHP / 103 TBP / DP1 / AHTS **Call Sign: 5BSA2**

Principal Particulars:

Flag	: Limassol, Cyprus
Year Built	: 2008
Place Built	: Yuexin Shipbuilding Co., Ltd. China
Length Overall	: 69.90 m
Length B.P.	: 61.20 m
Beam Overall	: 16.60 m
Depth Moulded	: 7.20 m
Design Draft	: 4.50 m
Scantling Draft	: 5.90 m
IMO No.	: 9494319
Official No.	: 5315742

Classification:

ABS +A1, Towing Vessel, Fire Fighting Vessel Class 1, Offshore Support Vessel, (E), +AMS + DPS-1

Capacities:

Gross Tonnage	: 2538 tons
Net Tonnage	: 761 tons
Deadweight	: 1227 tons@4.5m draft
	: 2623 tons@5.9m draft
Fuel Tank	: 996 m ³
Potable Water	: 580 m ³
Drill Water	: 992 m ³
Mud Tank	: 432 m ³
Brine	: 369 m ³
Foam	: 10 m ³
Dispersant	: 11 m ³
Deck Cargo Area	: 438 m ² (approx. 35m x 12.5m)
Deck Cargo	: 900 tons
Cargo Deck Load	: 10T/m ² for area abt 193 m ²
	: 5T/ m ² for area abt 245 m ²
Reefer Points	: 4 (2x440v, 2x220v)

Speed/Fuel:

Max Speed	: 14 kts
Quality of Fuel	: MGO

Discharging Rates:

Drill Water/Pump	: 1 x 150 m ³ /hr@70m head
Fresh Water/Pump	: 1 x 150 m ³ /hr@70m head
Fuel/Pump	: 1 x 150m ³ /hr@70m head
Brine/Pump	: 1 x 80 m ³ /hr@120m head
Liquid mud/Pump	: 1 x 100 m ³ /hr@85m head
Loading Computer	: Bridge control
Flow Meter	: 1 for FO with printer output

Bulk Plant:

249 m³ in 4 tanks
Working pressure 6 bar; Refrigeration Air Dryer units

Accommodation:

Officer/Crew	: 17
Berth Total	: 40 (1manx4, 2menx4, 4menx7)
Cabins Total	: 15
Hospital	: 1
Air conditional throughout	

Machinery & Equipment:

Main Engines	: 2 x MAN B&W 8L27/38, total output 2 x 3,970BHP @ 800RPM
Generators	: 2 x 1200kW Shaft generators Leroy Somer @440V 3Ph 60Hz
	: 2 x 370kW diesel alternators Cat3408C @440V 3Ph 60Hz
	: 1 x 99kW emergency diesel alternator Volvo Penta @440V 3Ph 60Hz.
Propellers	: 2 x 3.4M CP propellers in fixed nozzles, 2 independent high lift type rudders
Bow Thruster	: 2 x 430kW CP rated 6.5T Tunnel thruster
Stern Thruster	: 1 x 430kW CP rated 6.5T Tunnel thruster
Deck Crane	: 5T Knuckle Boom @ 18m radius (mounted on stbd side aft of accom)

Tow/Anchor-handling Equipment:

Tow/AH Winch	: 1 x double drum waterfall, low pressure; Stall Pull 200T Brake holding 300T Brake holding capacity @400 tons; Rig Chain size 76mm dia
--------------	---

Wire Drum	: 2 x 1500m each @ 64mm dia wire
Storage Drum	: 1 x 5T @ 0-30m/min 1500m 64mm sw rope
Tugger Winch	: 2 x 10T each @ up to 16m/min
Shark Jaw	: 1 x Triplex H200, SWL 200 tons
Tow Pin	: 1 x Triplex S115, SWL 115 tons
Capstans	: 2 x 5T each @ 0-15m/min
Stern Roller	: 1 x 300 tons SWL, 6m x 2m dia
Grapnel Hook	: 1 x 110 tons
J Hook	: 1 x 110 tons
Wildcats	: 2 units
Chain Lockers	: 2 x 80m ³

Towing / AH Wires:

Main Tow Wire	: 1500m x 56mm dia
AH Wire	: 350m x 64mm dia
Spare tow Wire	: 1500m x 56mm dia
Pennant Wire	: 64mmx100m & 64mmx60m with both end aluminium mechanical spliced thimble

Mooring Equipment:

Windlass	: 10T @ 9m/min for chain cables
Anchors	: 2 x AC-14 Stockless anchors each 2460kg
Cables	: 550m x 44mm dia

DP/Joystick Control:

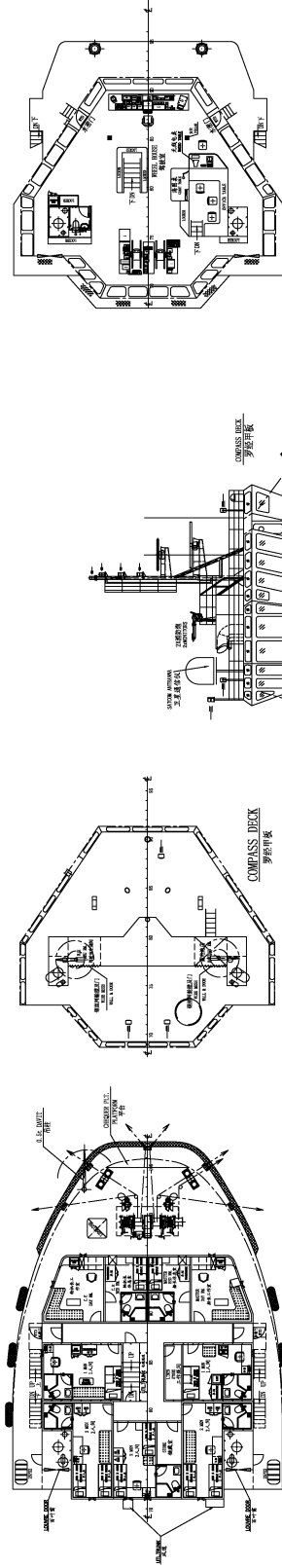
Converteam Independent Joystick (IJS) ADP-1 system

Fifi 1 System/Oil Pollution Control:

2 x 1650m ³ /hr @ 140m head; Class Fifi I, Dispersant	
Foam Tank	: 10.89 m ³
Dispersant Boom	: 2 x 6m max. turning radius located on port and starboard

Navigation & Communication Equipment:

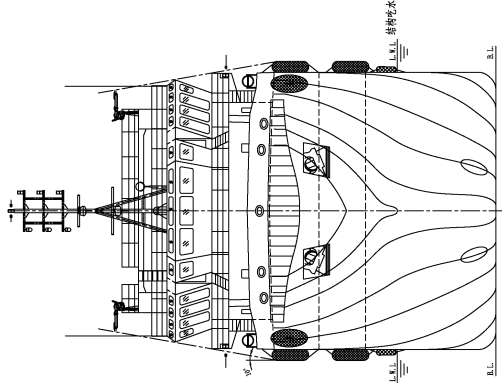
HF/FM/Telex	: Furuno FS-2570
VHF fixed	: Furuno FM-8800S
VHF portable	: McMurdo R1
Inmarsat C	: Furuno FELCOM 15 SSAS
Navtex	: Furuno NX-700B
Autopilot	: SIMRAD AP50
Radar ARPA	: Furuno FR2115 / FR1510MK3
Surface plotting	: Yes
DGPS	: Furuno GP 32
Gyro	: SIMRAD GC 80
Echo Sounder	: Furuno FE 700
ALS Transponder	: Furuno FA 150
Speed Log	: Furuno DS-80
GMDSS Radio	: 3 pcs, McMurdo R2
Magnetic Compass	: SAURA Keiki Seisakusho



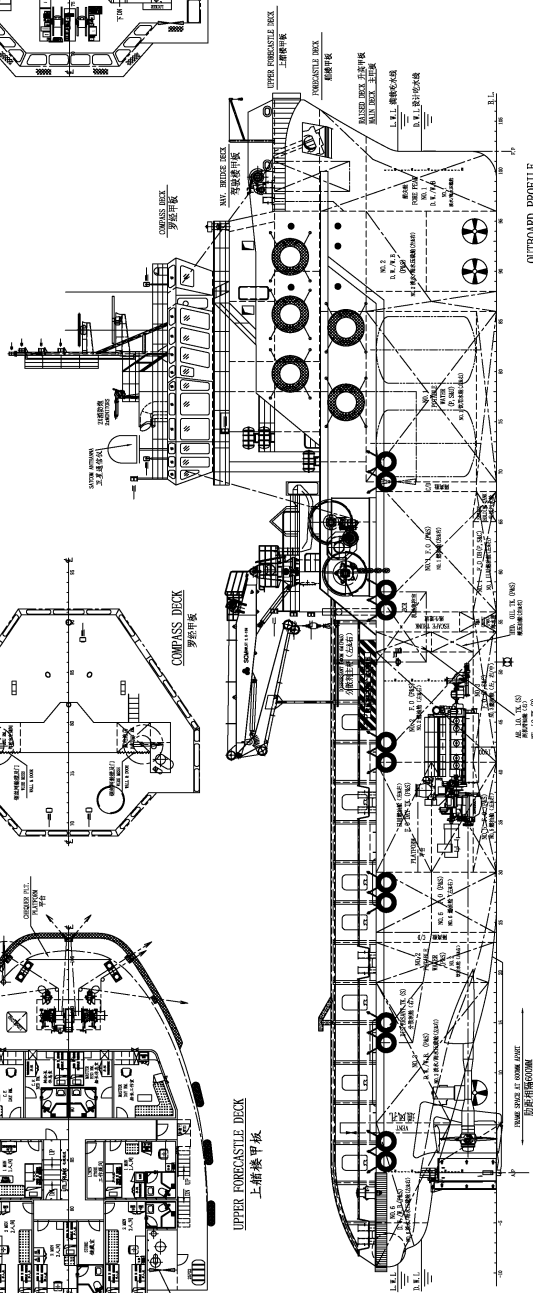
UPPER FORECASTLE DECK
上梢樓甲板

COMPASS DECK
罗经甲板

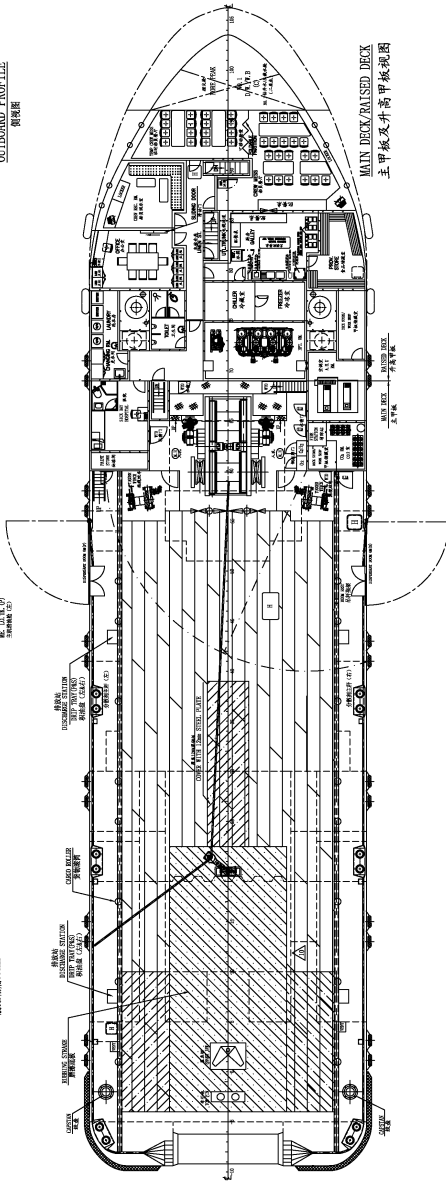
NAV. BRIDGE DECK
驾驶室甲板



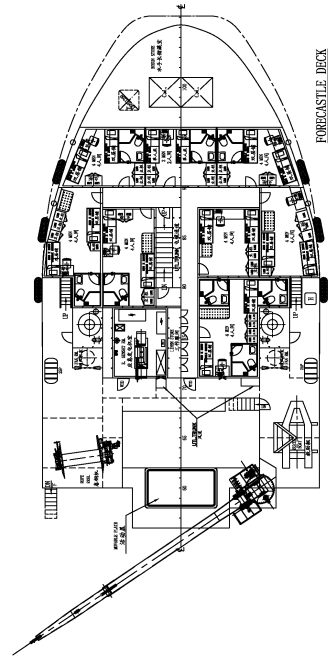
FRONT VIEW
首视图



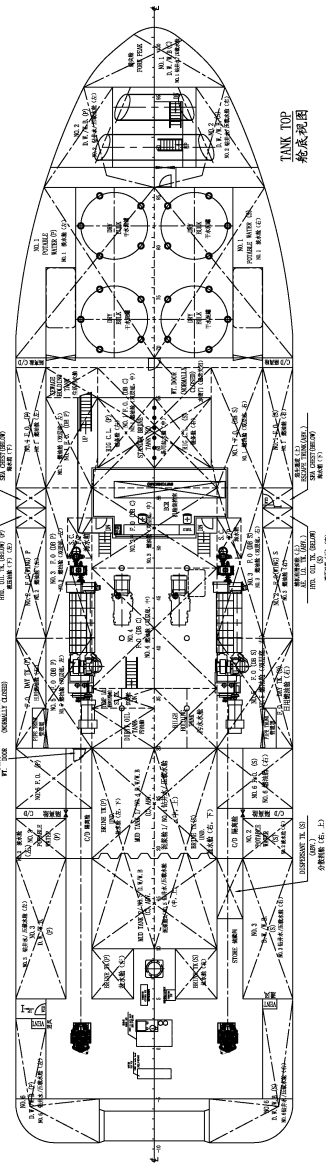
OUTBOARD PROFILE
侧视图



MAIN DECK RAISED DECK
主甲板及升高甲板视图



FORECASTLE DECK
梢樓甲板



TANK TOP
舱底视图

主要设计参数

船体长度 (m)	69.50m
船体长度 (ft)	228.00
船体宽度 (m)	16.60m
船体宽度 (ft)	54.46
设计吃水 (m)	4.50m
设计吃水 (ft)	14.76
甲板面积 (m²)	5,900
甲板面积 (ft²)	63,700
甲板容积 (m³)	40 MEN

PRINCIPAL PARTICULARS

CLASS: ABS CLASS 1 E OFFSHORE SUPPORT VESSEL,
TOWING SERVICE, FIRE FIGHTING CLASS 1

AS FINISHED

船名	PAOCC OFFSHORE PTE LTD	船型	GENERAL ARRANGEMENT
船东	YUEXING SHIPBUILDING CO. LTD	建造日期	2018.05.28
船厂	YUEXING SHIPBUILDING CO. LTD	建造地点	YUEXING
船主	YUEXING SHIPBUILDING CO. LTD	建造合同号	YX1802-100-01
船主地址	YUEXING SHIPBUILDING CO. LTD	建造合同号	YX1802
船主电话	YUEXING SHIPBUILDING CO. LTD	建造合同号	YX1802
船主邮箱	YUEXING SHIPBUILDING CO. LTD	建造合同号	YX1802
船主网址	YUEXING SHIPBUILDING CO. LTD	建造合同号	YX1802
船主传真	YUEXING SHIPBUILDING CO. LTD	建造合同号	YX1802
船主邮编	YUEXING SHIPBUILDING CO. LTD	建造合同号	YX1802
船主邮编	YUEXING SHIPBUILDING CO. LTD	建造合同号	YX1802

THIS DOCUMENT AND THE CONTENTS ARE CONFIDENTIAL AND INTEND TO BE KEPT SECRET. ANY DISCLOSURE OR REPRODUCTION OF THIS DOCUMENT WITHOUT THE WRITTEN PERMISSION OF THE ISSUING PARTY IS STRICTLY PROHIBITED. ANY DISCLOSURE OR REPRODUCTION OF THIS DOCUMENT WITHOUT THE WRITTEN PERMISSION OF THE ISSUING PARTY IS STRICTLY PROHIBITED.